

THE 2017 4th INTERNATIONAL CONFERENCE
ON INFORMATION TECHNOLOGY, COMPUTER,
AND ELECTRICAL ENGINEERING

ICITACEE 2017

OCTOBER 18 -19, 2017



The Wujil Resort and Conventions
Semarang, October 18 - 19, 2017



DEPARTMENT OF COMPUTER ENGINEERING
FACULTY OF ENGINEERING
DIPONEGORO UNIVERSITY



Proceedings

**The 2017 4th International Conference on Information
Technology, Computer, and Electrical Engineering (ICITACEE)**

October 18-19, 2017, Semarang, Indonesia

Editor:

Mochammad Facta
Munawar Agus Riyadi
Agung Budi Prasetijo
Eko Didik Widiyanto
Dania Eridani

Proceedings

The 2017 4th International Conference on Information Technology, Computer, and Electrical Engineering (ICITACEE)

Copyright and Reprint Permission: Abstracting is permitted with credit to the source. Libraries are permitted to photocopy beyond the limit of U.S. copyright law for private use of patrons those articles in this volume that carry a code at the bottom of the first page, provided the per-copy fee indicated in the code is paid through Copyright Clearance Center, 222 Rosewood Drive, Danvers, MA 01923. For reprint or republication permission, email to IEEE Copyrights Manager at pubs-permissions@ieee.org. All rights reserved.

Copyright ©2017 by IEEE.

Publisher :

Department of Computer Engineering
Diponegoro University

ISBN : 978-1-5386-3946-7 (PRINT, Part Number : CFP1789Z-PRT)

ISBN : 978-1-5386-3945-0 (USB, Part Number : CFP1789Z-USB)

ISBN : 978-1-5386-3947-4 (XPLORE COMPLIANT, Part Number : CFP1789Z-ART)

Additional copies may be ordered to:
Department of Computer Engineering
Diponegoro University,
Jl. Prof. H. Soedarto, S.H., Tembalang
Semarang, Indonesia 50275

The 2017 4th International Conference on Information Technology, Computer, and Electrical Engineering (ICITACEE)

Conference Committee

General Chair : Agung Budi Prasetyo (Universitas Diponegoro)

Co-Chair : Aghus Sofwan (Universitas Diponegoro)

Secretary : Dania Eridani

Organizing Committee:

Munawar Agus Riyadi

R. Rizal Isnanto

Risma Septiana

Andi Widiasmoro

Melati Mawas Titi

Eko Didik Widiyanto

Yudi Eko Windarto

Kurniawan Teguh Martono

Adnan Fauzi

Steering Committee:

Hiroshi Ochi (Kyushu Institute of Technology, Jepang)

Hiroshi Furukawa (Kyushu University, Jepang)

Kuncoro Wastuwibowo (IEEE Indonesia Section)

Trio Adiono (IEEE Solid State Circuits Indonesia Chapter)

Mauridhi Hery Purnomo (Sepuluh Nopember Institute of Technology)

Razali Ismail (University Teknologi Malaysia)

Taufik (California Polytechnic State, USA)

Technical Program Committee:

Mochammad Facta (Diponegoro University, Indonesia)

Masayuki Kurosaki (Kyushu University, Japan)

Trio Adiono (Bandung Institute of Technology, Indonesia)

P. Insap Santosa (Gadjah Mada University, Indonesia)

Hermawan (Diponegoro University, Indonesia)

Mauridhi Hery Purnomo (Sepuluh Nopember Institute of Technology, Indonesia)

Khoirul Anwar (Japan Advanced Institute of Science and Technology, Japan)

Wahyudi (Diponegoro University, Indonesia)

Tole Sutikno (Ahmad Dahlan University, Indonesia)

Wahyul Amien Syafei (Diponegoro University, Indonesia)

Munawar Agus Riyadi (Diponegoro University, Indonesia)

Sidiq Syamsul Hidayat (Semarang State Polytechnics, Indonesia)

Supari (Semarang University, Indonesia)

Slamet Riyadi (Soegijapranoto Catholic University, Indonesia)

M. Haddin (Sultan Agung Islamic University, Indonesia)

Onil Nazra Persada (CIRELA, France)
Zolkafle Buntat (Universiti Teknologi Malaysia)
Taufik (California Polytechnic State University, USA)
Hashim Uledi Iddi (University of Dar es Salaam, Tanzania)
Aris Triwiyatno (Diponegoro University, Indonesia)
Pandu Sandi Pratama (Pusan National University, South Korea)
Razali Ismail (Universiti Teknologi Malaysia, Malaysia)
Ismail Saad (University Malaysia Sabah, Malaysia)
Oky Dwi Nurhayati (Diponegoro University, Indonesia)

TABLE OF CONTENTS

Keynote Speakers

- 1 Bioinspired Algorithms for Internet of Things Network
Riri Fitri Sari
- 2 Assessing Information Security Culture: The Case of Malaysia Public Organization
Mohamad Noorman Masrek
- 3 4th Industrial Revolution: The Future of Machining
Azli Yahya

Computer Science

- 5 Mapping Multiple Databases to Resource Description Framework with Additional Rules as Conclusions
Drawer
Atleiya Julianita, Saptadi Nugroho, Banu Wirawan Yohanes
- 9 Designing Android Reward System Application in Education to Improve Learning Quality
Ratih Isnaini, Basori Basori, Rosihan Ari Yuana, Dwi Maryono
- 15 Location Prediction Model using Naïve Bayes Algorithm in a Half-open Building
Banu Wirawan Yohanes, Samuel Yanuar Rusli, Hartanto Kusuma Wardana
- 20 A System Engineering Approach to the Implementation of the Internet of Things (IoT) in a Country
Muhammad Suryanegara, Ajib Setyo Arifin, Muhamad Asvial, Gunawan Wibisono
- 24 Application of Design Patterns and Quality Measurement on Academic Information Systems
Siti Rochimah, Afif Ishamsyah Hantriono, Rizky Januar Akbar, Andreyan Rizky Baskara
- 31 Part of Speech Features for Sentiment Classification based on Latent Dirichlet Allocation
Eka Surya Usop, R. Rizal Isnanto, Retno Kusumaningrum
- 35 A Multiple Classifiers Broadcast Protocol for VANET
Sami S. Alwakeel, Hesham A. Altwaijry, Agung B. Prasetijo
- 41 Buy/Sell Signal Detection in Stock Trading with Bollinger Bands and Parabolic SAR with Web Application for Proofing Trading Strategy
Agung B. Prasetijo, Takdir A. Saputro, Ike P. Windasari, Yudi E. Windarto
- 45 Hoax Detection System on Indonesian News Sites Based on Text Classification using SVM and SGD
Agung B. Prasetijo, R. Rizal Isnanto, Dania Eridani, Yosua Alvin Adi Soetrisno, M. Arfan, Aghus Sofwan
- 50 Analysis of Custody Transfer on Moving Bundle Protocol of Wireless Router in Delay Tolerant Network (DTN)
Fitri Noviani, Deris Stiawan, Sri Desy Siswanti, Tri Wanda Septian, Munawar A. Riyadi, Fahad Aljaber, Rahmat Budiarto

Electric Power

- 54 A Bi-directional Boost Converter-Based Non-Isolated DC-DC Transformer with Modular Solid-State Switches for Medium-/High-Voltage DC Grids
Ahmed Elserougi, Ahmed Massoud, Shehab Ahmed
- 60 Enhancing the DC Voltage Utilization of Twelve-Switch Voltage Source Inverter Feeding Symmetrical/Asymmetrical Nine-Phase Loads
Ahmed Elserougi, Ibrahim Abdelsalam, Ahmed Massoud, Shehab Ahmed
- 66 Determination of the Conduction Angle for Switched Reluctance Motor Drive
Slamet Riyadi
- 71 Load Shedding and Forecasting in Distribution Systems with PV-based Distributed Generation and Electric Vehicles
Anas Tahir, Ahmed Massoud

- 77 A Three-Level Common-Emitter Current Source Inverter with Reduced Device Count
Suroso Suroso, Daru Tri Nugroho, Winasis Winasis
- 81 Reduction of Cogging Torque on Brushless Direct Current Motor with Segmentation of Magnet Permanent
Rudy Setiabudy, Herlina Herlina, Yudha Sasmita Putra
- 87 Optimal Photovoltaic Placement at the Southern Sulawesi Power System for Stability Improvement
Ardiaty Arief, Muhammad Bachtiar Nappu, Sitti Marwah Rachman, Mustadir Darusman
- 93 Feature Extraction Using Hilbert-Huang Transform for Power System Oscillation Measurements
Buyung Sofiarso Munir, Muhamad Reza, Agung Trisetarso, Bahtiar Saleh Abbas
- 97 Audit of Harmonic on Residential Loads in Central Java
Sapto Nisworo, Deria Pravitasari
- 102 Harmonics Monitoring of Car's Inverter using Discrete Fourier Transformation
Mat Syai'in, N.H. Rohiem, R. K. Tobing, M.A. Atmoko, M. F. Adiatmoko, A. Soeprijanto, A.M Hatta, Sekartedjo Sekartedjo
- 108 Voltage Sag Mitigation Due To Short Circuit Current Using Dynamic Voltage Restorer Based On Hysteresis Controller
Nizamul Muluk, Agung Warsito, Juningtyastuti Juningtyastuti, Iwan Setiawan
- 113 Design Analysis of Photovoltaic Systems as Renewable Energy Resource in Airport
Hermawan Hermawan, Karnoto Karnoto
- 117 Design and Development of Data Acquisition for Leakage Current at Electrical Tracking Test
Jumrianto Jumrianto, Wahyudi Wahyudi, Abdul Syakur
- 123 Experimental Study on Lightning Air Terminal Performance based on Material Type
Abdul Syakur, Agung Nugroho, Anastasia Br. Napitupulu
- 127 Comparison of Cost Estimation Methods in Power Wheeling for Java-Bali Interconnection System
Hermawan Hermawan, Trias Andromeda
- 131 Optimization of Gas Turbine Power Plant Economic Dispatch using Cuckoo Search Algorithm Method
Tejo Sukmadi, Ariya Dwi Wardhana, Munawar Agus Riyadi

Electronics, Robotics and Instrumentation

- 136 Ball Detection Algorithm for Robot Soccer based on Contour and Gradient Hough Circle Transform
Ane Cornelia, Iwan Setyawan
- 142 Hardware Design of Queuing Free Environmental Friendly Automatic Toll Gate Using RFID
W. A. Syafei, A. F. Listyono, Darjat Darjat
- 147 Smart Meter based on Time Series Modify and Constructive Backpropagation Neural Network
M. F. Adiatmoko, Adi Soeprijanto, Mat Syai'in, Nasyith Hananur R
- 154 The Development of Soil Water Content Detector
Amin Suharjono, Muhammad Mukhlisin, Nur Khodijah M. Alfisyahrin
- 158 Applying Maritime Wireless Communication to Support Vessel Monitoring
Zahir Zainuddin, Wardi Wardi, Yurika Nantan
- 162 Design of Lungs Volume Measuring Instrument using Pressure Sensor Based on Arduino Uno R3 with Bluetooth Integration
Gayuh Nurul Huda, Eko Didik Widiyanto, Oky Dwi Nurhayati
- 170 Designing and Implementing the Arduino-based Nutrition Feeding Automation System of a Prototype Scaled Nutrient Film Technique (NFT) Hydroponics using Total Dissolved Solids (TDS) Sensor
Dania Eridani, Olivia Wardhani, Eko Didik Widiyanto
- 176 Door And Light Control Prototype Using Intel Galileo Based Internet of Things
Yudi Eko Windarto, Dania Eridani
- 181 Particle Swarm Optimization (PSO)-Based Self Tuning Proportional, Integral, Derivative (PID) for Bearing Navigation Control System on Quadcopter
Sumardi Sumardi, Muhammad Surya Sulila, Munawar Agus Riyadi
- 187 Design of Integrated SCADA Systems in Piston Production Manufacturing Case Study on the Conveyor, the Coolant, the Hydraulic, and the Alarm Systems using PLC CJ1M and CJ1W-ETN21
Syahril Ardi, Agus Ponco, Rizky Awaludin Latief

- 192 Design of Pokayoke Systems to Increase the Efficiency of Function Check Oxygen Sensor Machine using Programmable Logic Controller in Manufacturing Industry
Syahril Ardi, Harits Abdurrahman

Image and Signal Processing

- 197 Pattern Recognition Analysis of Herbal Leaves Based on Distance-Based Similarity Measures Using the Gray Level Co-Occurrence Matrix Feature Extraction
M. Fahmi Awaj, R. Rizal Isnanto, Munawar Agus Riyadi
- 203 StegoCrypt Method using Wavelet Transform and One-Time Pad for Secret Image Delivery
Andik Setyono, De Rosal Ignatius Moses Setiadi, Muljono Muljono
- 208 A Secure Image Watermarking using Chinese Remainder Theorem Based on Haar Wavelet Transform
Usman Sudiby, Fatma Eranisa, De Rosal Ignatius Moses Setiadi, Christy Atika Sari
- 213 Plant Age Identification System of Outdoor Hydroponic Cultivation Based on Digital Image Processing
Arif Nursyahid, Mochammad Rizal Wibisono, Eni Dwi Wardihani, Helmy Helmy, Thomas Agung Setyawan
- 219 Herb Leaves Recognition Using Combinations of Hu's Moment Variants - Backpropagation Neural Network and 2-D Gabor Filter - Learning Vector Quantization (LVQ)
R. Rizal Isnanto, Achmad Hidayatno, Ajub Ajulian Zahra, Eskanesiari Eskanesiari, Aditya Indra Bagaskara, Risma Septiana

Information Technology

- 225 Review on the Application of Financial Technology for the Wayang Orang Ngesti Pandowo Cultural Creative Industry
Albertus Dwiyoga Widiatoro, Ridwan Sanjaya, Tjahjono Rahardjo, Rahmat Djati
- 230 Online Judging System for Programming Contest using UM Framework
I Made Wirawan, Augusta Rakhmat Taufani, Irawan Dwi Wahyono, Irham Fadlika
- 235 Regulatory Framework Creation Analysis to Reduce Security Risks The Use of Social Media in Companies
Oktavianus Teguh Prayitno, Ofelia Cizela da Costa Tavares, Amaya Andri Damaini, Djoko Budiyanto Setyohadi
- 239 Student Learning Styles and Emotional Tendencies Detection Based on Twitter
Robet Habibi, Djoko Budiyanto Setyohadi, Kartika Imam Santoso
- 244 Inter-Organizational Information System Affect Organization Structure for Supply Chain Management Using Method SET and Method TREV
Rakotovao Andriamitovo Andry Michel, Ginanjar Setyo Nugroho, Chaken Charles Z Slarmanat, Djoko Budiyanto Setyohadi
- 249 Integration Of Pharmacy And Drug Manufacturers In RSUD Dr Samratulangi Tondano By ESB WSO2 To Improve Service Quality (A Case Study of RSUD Dr Samratulangi Tondano, Minahasa Regency, North Sulawesi)
Damar Suryo Sasono, Frendy Rocky Rumambi, Ressa Priskila, Djoko Budiyanto Setyohadi
- 255 Analysis and Design of Web-Geographic Information System for Tropical Diseases-Prone Areas: A Case Study of East Java Province, Indonesia
Anik Vega Vitianingsih, Dwi Cahyono, Achmad Choiron
- 261 Smartphone Application Development for Monitoring and Early Warning on Environmental Health
Kodrat Iman Satoto, Eko Didik Widiyanto, Sumardi Sumardi
- 266 Sentiment Analysis on Twitter Posts: An analysis of Positive or Negative Opinion on GoJek
Ike Pertiwi Windasari, Fajar Nurul Uzzi, Kodrat Iman Satoto
- 270 Design of Learning Media for Fish Classification with Augmented Reality Technology
Kurniawan Teguh Martono, Adnan Fauzi
- 276 Sentiment Analysis on Travel Destination in Indonesia
Ike Pertiwi Windasari, Dania Eridani
- 280 Wireless Sensor Network Design for Landslide Warning System in IoT Architecture
Aghus Sofwan, Sumardi Sumardi, M. Ridho, Abdul Goni, Najib Najib

- 284 Enterprise Architecture Analysis and Design of Manufacturer Company Based on TOGAF ADM 9.1: Case Study on Sales Marketing and Technology Function in PT. XYZ
Rahmat Mulyana, Jihan Herdiyanti Syafira
- 290 Evaluation of IT Governance Using the Cobit 5 Framework on PTPN 7
Ibrahim Ibrahim, Arnisa Stefanie
- 294 Automatic detection of epilepsy using Wavelet Transformation and ELM
Siswandari Noertjahjani, Adhi Susanto, Risanuri Hidayat, Samekto Wibowo

Wireless and Telecommunication

- 300 Design of Measurement System for HF MIMO NVIS Channel
Sarah Lasroma Manalu, Gamatyo Hendrantoro, Achmad Mauludiyanto
- 306 Design and Analysis of Slimjim Dual Band VHF and UHF Antenna with Crossarm Variation
Yuli Christyono, Ihsan Atmaji, Teguh Prakoso
- 312 Bandwidth Enhancement of Circular Microstrip Antenna Using Characteristic Mode Analysis
Teguh Prakoso, Liya Y. Sabila, Denti A. Damayanti, Aghus Sofwan, Munawar A. Riyadi, Sudjadi Sudjadi, Sukiswo Sukiswo, Enda W. Sinuraya, Karnoto Karnoto

Analysis and Design of Web-Geographic Information System for Tropical Diseases-Prone Areas: A Case Study of East Java Province, Indonesia

Anik Vega Vitianingsih, Dwi Cahyono, Achmad Choiron
Informatics Department Universitas Dr. Soetomo Surabaya-Indonesia
vega@unitomo.ac.id, dwikk@unitomo.ac.id, choiron@unitomo.ac.id

Abstract— Analysis and design system in this paper is used to model Web-Geographical Information System (Web-GIS). The results can be used to create Web-GIS applications that are able to identify prone-areas to tropical diseases in East Java of Indonesia, using Multi-Attribute Utility Theory (MAUT). This Web-GIS information system includes the distribution of the affected areas, endemic areas, epidemiological inquiry and tropical diseases-free areas. Web-GIS analysis process consists of: describing requirements system, outlining the need of spatial data (layers) and attribute data tables, create a process model with tiered diagram and data flow diagram that describe the process flow of a Web-GIS system. System design process by making Conceptual Data Model (CDM) serves to describe the needs of spatial data and attribute data in a database system. CDM is generated and produces Physical Data Model (PDM). PDM contains the metadata structures of the spatial data and attribute data that will be processed and stored in the Web-GIS application program. Geoprocessing Layers are implementation of the analysis process and design system, processing layer by buffering, union, and intersection layer techniques. The layer is generated from geoprocessing and processed by entering parameters in MAUT method to result the identification of tropical diseases prone areas.

Keywords—*Web-GIS, System Analysis, System Design, Tropical Disease, MAUT Method.*

I. INTRODUCTION

East Java Province is a tropical region with average temperature between 21 - 34°C and average annual rainfall of 1,900 mm [1]. With these climatic conditions, East Java Province is prone to tropical diseases such as *Tuberculosis, Diphtheria, Pertussis, Tetanus neonatorum, Leprosy, Dengue Haemorrhagic Fever (DHF), Measles, HIV-AIDS, Malaria, Filariasis* [2]. The society nowadays are still difficult to get information about the number of incidents of tropical diseases, because the information generated is still limited to annual data recorded in the form of data tables and analog maps. The data includes the number of cases of people with tropical diseases, death rates, cure rates, percentage of patients and extra-ordinary events [1]. In order to support health sector development through Dinas Kesehatan, there is a need of accurate data and information with digital mapping system to be used in the

decision-making process and program planning to reduce the spread of the diseases.

In East Java, which is one of Indonesia's tropical regions, many emerging tropical climatic diseases arrive during transitional season. Tropical disease refers to infectious diseases caused by bacteria, viruses, and parasites that thrive in the tropics. Tropical disease is almost uncontrollable which is characterized by the number of extraordinary events in recent years. The disease caused by several factors of transmission such as parasitic factors (agent) and host factors. The long dry season and heavy precipitation events greatly influence the formation of breeding grounds for disease agents [1].

Regional susceptibility to tropical diseases in East Java is determined based on outbreak data on certain types of the diseases in 3 (three) consecutive years. Category of the Endemic area applied to a region if there are tropical disease events in 3 (three) consecutive years, category of a sporadic area in case of non-consecutive events in three years (annual data scale), and potential area for certain disease types if there is no occurrence in the last 3 years [1]. The classification of endemic levels is not associated with the number of cases.

In recent times, the map of regional distribution based on the level of susceptibility to the tropical diseases already exists. However, the map is only based on the diseases occurrence in the last year, mapping by combining data intensity and diseases frequency has not been done. Information about the area distribution based on the level of susceptibility is necessary to determine priority areas for the implementation of anticipatory and prevention programs by the Public Health Services[3,4].

Accurate data and information are required for the process of decision making and program planning in order to support the development of health's field practices. In addition, the Law of the Republic of Indonesia Number 36 Year 2009 concerning Health Article 17 Paragraph (1) states that the government shall be responsible for the availability of access to information, education, and health service facilities in order to improve and maintain maximum health degree. Article 168 also states that to organize an effective and efficient health effort is required health information that shall be conducted through the

information system and cross-sector. Article 169 mentions that the government shall provide convenience to the public to gain access to health information in order to improve public health status [1].

Based on the research that the authors did, the use of Geographical Information System (GIS) and Web-GIS technology can perform spatial analysis and temporal analysis. It has the capability to produce an integrated analysis covering all aspects [3]. Map showing the regional distribution of the diseases is useful for the empirical study of the relationship between climate, weather and other diseases or other health problems that are useful to implement the intervention plan [5].

The purpose of this research is to develop the Geographic Information System Web-GIS which can map information about the distribution of tropical diseases affected areas in East Java. The result shows that tropical diseases-prone area can be identified based on the data intensity of tropical diseases such as the type of residential area, population density, puddle type, air temperature, average rainfall, air humidity, the number of health facilities and the diseases frequency[6,7]. Web-GIS modeling system uses Multi Attribute Utility Theory (MAUT) to display the mapping analysis by determining the weight value and priority value for each parameter [8].

Web-GIS GIS system is expected to help people to be aware and live a healthy lifestyle to avoid the danger of tropical diseases and also for East Java Provincial Health Office as the decision-maker to do the planning, prevention, and eradication of tropical diseases to some areas with extraordinary events.

II. RESEARCH METHODOLOGY

A. System Requirement Analysis

The analysis of system requirements explore the needs of spatial data (layer) and data attributes (database) that will be used as the basis of analysis and system design. Analysis of system requirements includes a real system, evaluation and the study of data feasibility by describing the form of Web-GIS to be created [9]. Analyzing the need for spatial data and attribute data that will be used to process the system and determine the data flow for database design by depicting it into a tiered Diagram and Data Flow Diagrams (DFD).

In this research, the output model of Web-GIS requirement analysis is data availability of tropical disease in East Java Province, multiplying the supporting parameters that will be used as a reference to determine tropical diseases-prone areas and perform the process of analysis and design of application system to a database system. As the results shows in Table 1 below,

Table I. Output Model of System Requirement Analysis

Type	Output
Literature Studies	- Concept of Web-GIS - GIS technology
Field Studies	- User requirement - Organizational initialization - Observe the scope of the research
Information Requirements	- Spatial data requirements (layer) - Attribute data requirements (database table)

Type	Output
System Analysis	- Description of GIS - System process flow - Analysis of spatial data and attribute data - Parameter analysis of spatial data layer and attribute data by making a tiered Diagram of the DFD system process - User Interface Design
Database System Design	- Spatial data and attribute data with CDM (Conceptual Data Modelling), PDM (Physical Data Modelling) and Star Schema - Geoprocessing Layer (Buffer, Union, and Intersect Layer) - Layer design with MAUT method - Database design is completed

Database system design is performed by designing Conceptual Data Model (CDM), Physical Data Model (PDM), Geoprocessing Layer (Buffer, Union, and Intersect Layer), Layer Design with MAUT method and User Interface Design. As shown in Figure 1 and Table 1 below,

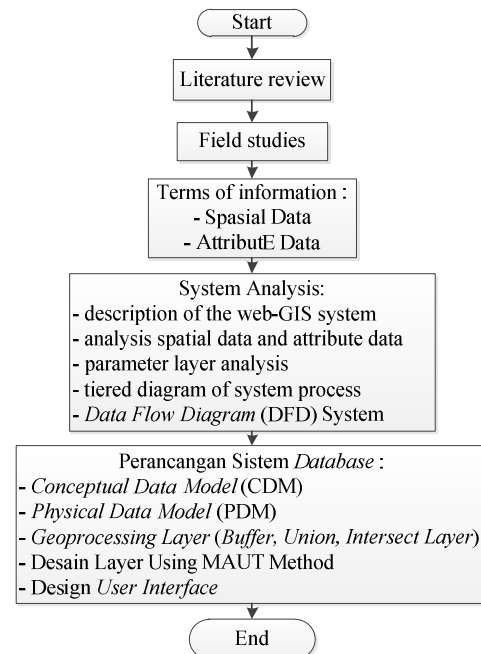


Fig.1. Analysis of System Requirements

B. Geoprocessing Layer With MAUT Method

Type of decision making in GIS involves several viable alternatives and interrelated evaluation criteria called multi-criteria decision making (MCDM). GIS-based multi-criteria decision analysis is a process to combine and transform spatial data into a result decision, in which the ability of GIS are data acquisition, storage, search, manipulation and spatial analysis. The use of MCDM is to combine geographic data and preferences for the decision-maker to determine alternative values [10].

The technique and procedure of GIS in multi-criteria decision analysis is to automate, manage, and analyze spatial data and attribute data in a spatial decision. MCDM procedure

determines the relationship between input map and output map [11].

Multi-attribute utility theory (MAUT) method used to calculate the overall value of the choice alternative on a sub-criterion. The form of the representation theorem for some attribute value function is determined by the set of conditions for the decision-maker, with the formula as follows [8]:

$$v(x_1, x_2, \dots, x_N) = \sum_{i=1}^N k_i v_i(x_i) \quad (1)$$

In which $v_i(x_i)$ is function value for attribute i , k_i is the attribute parameter and i based on the uncertainty relation between the attributes.

Geoprocessing layer processed by digitizing an analog map to insert all attribute data, parameters, and criteria stored in the form of a Shapefile (*.shp) which will become a layer. Then the buffer process will be performed to the layer to create polygons from the layer area, after the buffer layer is formed then the main layer data and the region layer will be merged. The layer generated from the merging process will produce some outer layer coverage beyond the actual layer range, remove it using intersect process to create overlay layer result. The process of geoprocessing layer is as shown in Figure 2 and Table II below,

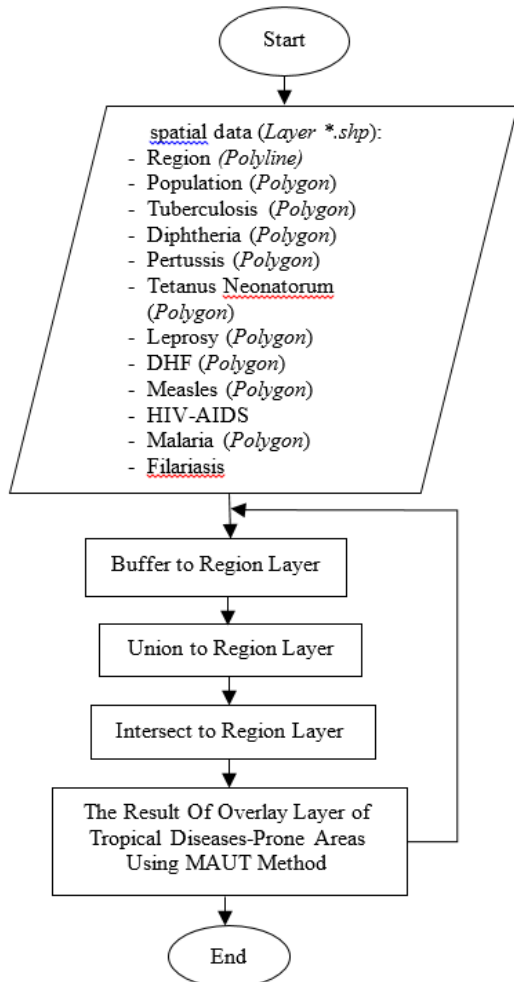


Fig. 2. Geoprocessing Layer

Table II. Output Model of Geoprocessing Layer

Type	Output
System Implementation	<ul style="list-style-type: none"> - Database connection application program (Microsoft SQL Server Management Studio) - System framework implementation (Arc GIS API 3.2 for Silverlight dan Arc GIS Viewer for Silverlight) - Implementation of GIS (ArcGIS Desktop 10.2 dan ArcGIS Server 10.2) - Coding programming - Menu design of application program - Coding application program with PHP
Evaluation System	Prototype improvements to check the program that has been made based on the expected solution
Documentation System	<ul style="list-style-type: none"> - System reports - Data reports - Program file report

C. Building Prototype of GIS System

Prototype of Web-GIS system is formed from the results of geoprocessing layer, the layer then connected to the SQL Server database to form the attribute data table as a link between the spatial data and attribute data. In this research, GIS prototype is built in the form of Web-based GIS or referred to as Web-GIS system. Web servers are used to connect spatial database and attribute database in Web-GIS system using ArcGIS Desktop 10.2 and ArcGIS Server 10.2. The implementation of system prototype is using ArcGIS API 3.2 for Silverlight and ArcGIS Viewer for Silverlight with PHP/Hypertext Preprocessor programming.

System evaluation performed through trial and error process, and the final stage is performed by making the documentation system. The flowchart of GIS system prototyping shown in Figure 3 below,

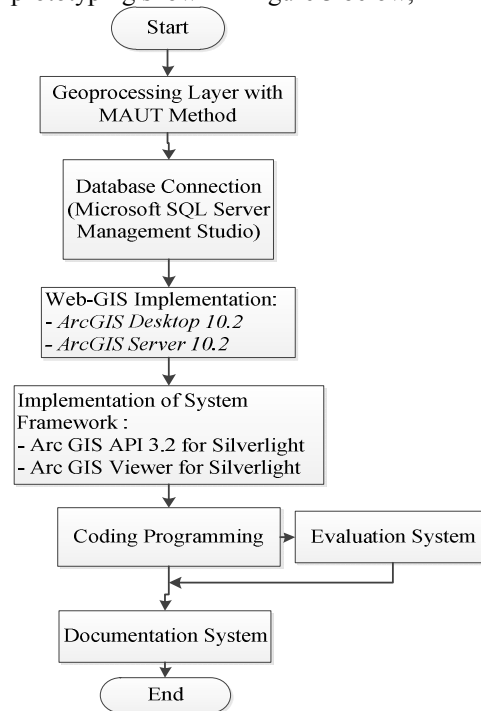


Fig. 3. Flow Prototype System Web-GIS

The output model to build GIS prototype is the availability of spatial data analysis' result and attribute data with MAUT method in the form of overlay layer produced from digitization process, buffer, union, and intersect layer. The results are shown in Table III below,

Table III. The Output Model to Build GIS Prototype

Type	Output
Implementation of Spatial Data (<i>Layer</i>)	- Digitization of all spatial data layers - All layers have been digitized (*.shp)
Implementation of Layer Analysis	- Process of buffer layer, union layer, and intersect layer
Result of analysis using MAUT method	- The results of overlay layer of areas prone to tropical diseases - The overlay layer is ready to use in Web map application

III. RESULT AND DISCUSSION

The design of this web-GIS application required analysis of spatial data and attribute data to be used in every process in the system. The correct analysis and process will result in a decision support system that capable of explaining logic and transforming from input data to output data.

A. Proses Model

Process model aims to clarify and demonstrate a process in the business flow on this web-GIS system, the system are expected to run in accordance with the procedures and processes described in the tiered diagram in Figure 4 below,

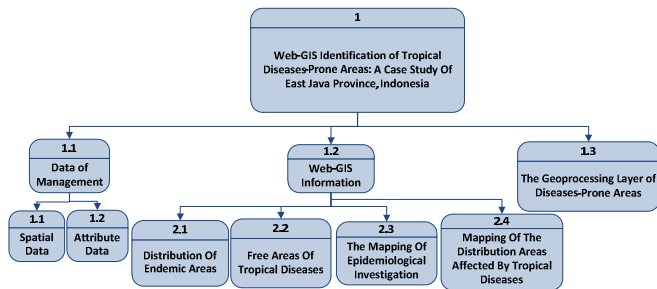


Fig. 4. The process model of Tropical Disease Web-GIS System

This research produce system analysis and system design for the process of designing prototype using data availability (1) Each district in East Java Province (2) Population per district (3) Affected areas, distribution and endemic areas on a case-by-year basis, case by age group and case by sex, (4) Epidemiological investigation of total patients with tropical diseases and (5) Parameters of areas prone to tropical disease; the intensity of the tropical disease, type of residential area, population density, puddle type, air temperature, average rainfall, air humidity, the number of health facilities and the frequency of tropical diseases in the area.

B. Data Flow Diagram (DFD)

DFD is used for the development of structured systems where the data flow and the data will be stored. It can describe the flow of data in the system with a structured. Besides, DFD is a good documentation system. The analyst process to describe the flow of DFD is using the device from the power designer that

allows users to present the process in the context diagram information system as shown in Figure 5 below,

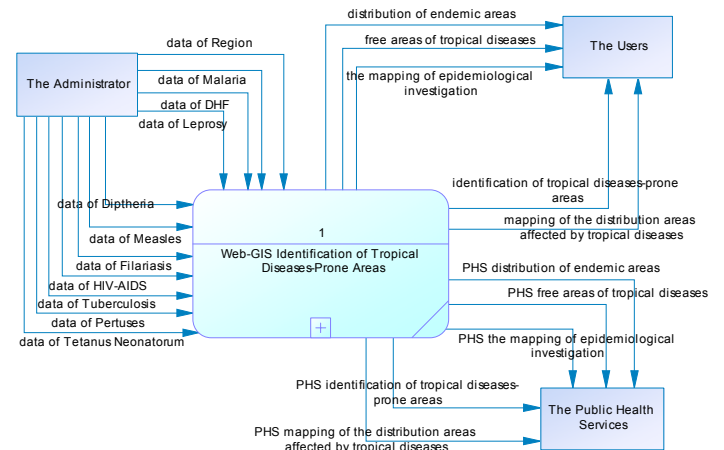


Fig. 5. Context Diagram of Tropical Diseases Web-GIS system

The system process in Figure 4 is where the spatial data of the *.shp layer and spatial data table of Region, Population, Tuberculosis, Diphtheria, Pertussis, Tetanus neonatorum, Leprosy, Dengue Haemorrhagic Fever (DHF), Measles, HIV-AIDS, Malaria, and Filariasis are entered by admin to web-GIS system. The system then will be processed to produce information distribution of areas affected by tropical diseases, the process of distribution of areas free of tropical diseases, process of endemic areas of tropical diseases, epidemiological investigation process and information on tropical diseases prone areas for external entities users and health department as policymakers. The next process is to decompose the process to explain the next process of DFD level as shown in Figure 6 below,

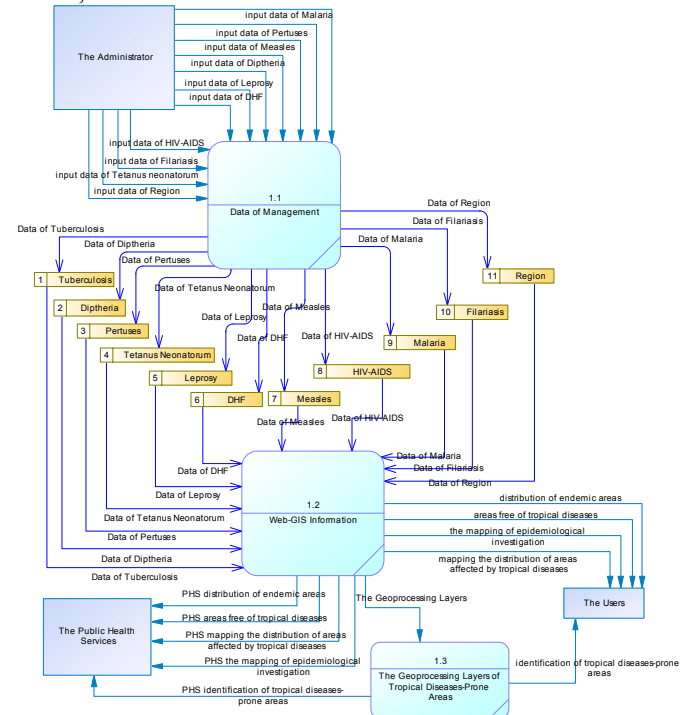


Fig. 6. DFD Level of Tropical Diseases Web-GIS System

DFD Level in Figure 6 explains:

- a. Process 1.1 data management is used to process spatial data of *.shp and attribute data table *.mdb, the data obtained from the East Java Provincial Health Office will be entered into the system web-GIS by admin, including the attributes that will be used in the system;
- b. Process 1.2 web-GIS information. There are four information processes that will be delivered by the system to the public, and also to the policy makers of East Java Provincial Health Office. The system obtained from the process of data management 1.1, including the process of distribution of areas affected by tropical diseases, the process of distribution of areas free of tropical diseases, the process of endemic areas of tropical diseases and the process of epidemiological inquiry.
- c. Process 1.3 geoprocessing layer processes to identify tropical disease prone areas based on the data of tropical disease intensity such as the type of residential area, population density, type of inundation, air temperature, average rainfall, air humidity, number of health facilities and the frequency of incidence of tropical disease using MAUT method.

C. Conceptual Data Model (CDM)

Each of these internal entities on web-GIS comes with attributes that presents all the facts of the built database. The entity on this CDM is the data processed in Figure 5.4. The entire spatial data and attribute data is automatically generated when creating a geodatabase in Arcmap software which then integrates with Microsoft SQL Server 2008 R2 as shown in Figure 7 below,

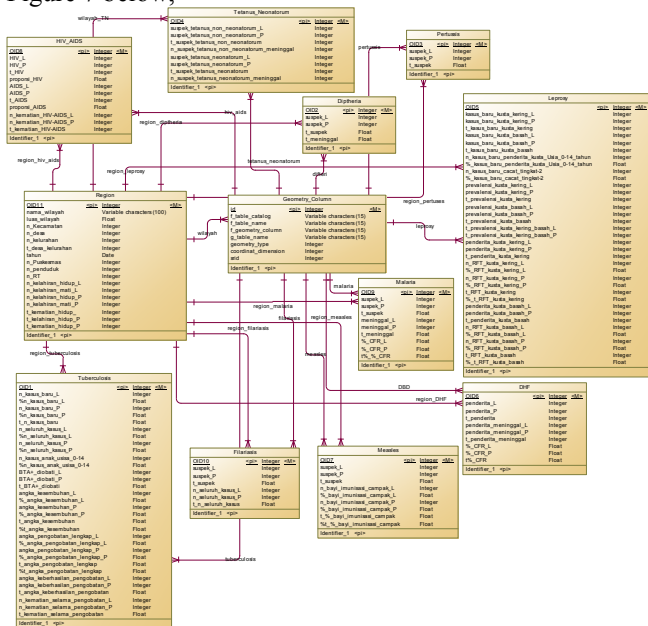


Fig. 7. Conceptual Data Model of Tropical Diseases Web-GIS System

Figure 7 is a design of a CDM system that maps the needs of tables and attributes which will be used in database creation on the creation of spatial layer data. The data attributes of Web-GIS system tables are identify areas prone to tropical diseases, including:

1. Region, which includes the name of the region, region size, the number of the sub-districts, the number of the villages, total number of villages and urban community, year, number of puskesmas (community health center), number of the population, households, live births of men, stillbirths of men, number of women births, number of women stillbirths, total births of men, total deaths of men, total female births and total deaths of women.
2. Tuberculosis, which includes the number of new male cases, the percentage of new male cases, the number of new female cases, the percentage of new female cases, total number of new cases, total number of male cases, percentage of total men cases, total number of women cases, percentage of total women cases, number of cases on children aged 0-14, percentage of cases on children aged 0-14, BTA+ treated in men, BTA+ treated in women, total BTA+ treated, male healing rate, the percentage of male healing rate, female healing rate, the percentage of female healing rate, total number of healing rate, total percentage of healing rate, full medication rates in male, percentage of full medication rates in male, full medication rates in female, percentage of full medication rates in female, total of full medication rates, total percentage of full medication, number of medication success in male, number of medication success in female, total number of medication success, number of deaths during medication in male, number of deaths during medication in female and total deaths during medication.
3. Diphteria, which includes male suspects, female suspects, total suspects and total deaths
4. Pertussis, which includes male suspects, female suspects and total suspects
5. Tetanus Neonatorum, which includes tetanus non neonatorum male suspects, tetanus non neonatorum female suspects, total suspects of tetanus non neonatorum, total deaths of tetanus non neonatorum, tetanus neonatorum male suspects, tetanus neonatorum female suspects, total number of tetanus neonatorum suspects and total deaths of tetanus neonatorum
6. Leprosy, which includes new cases of pausi basiler of men, new cases of pausi basiler of women, total new cases of pausi basiler, new cases of multi basiler of men, new cases of multi basiler of women, total new cases of multi basiler, total number of new cases of pausi basiler and multi basiler of men, total number of new cases of pausi basiler and multi basiler of women, total new cases of pausi basiler and multi basiler, total cases of leprosy on children aged 0-14 years, the percentage of new cases of lepers aged 0-14 years, the number of new cases of second-level disability, the percentage of new cases of second-level disability, the prevalence of pausi basiler on men, the prevalence of pausi basiler on women, the total prevalence of pausi basiler, the prevalence of multi basiler on men, the prevalence of multi basiler on women, total prevalence of pausi basiler and multi basiler on men, total prevalence of pausi basiler and multi basiler on women, total prevalence of pausi basiler and multi basiler, total prevalence of pausi basiler and multi basiler on men, total prevalence of pausi basiler and multi basiler on women, total prevalence of pausi basiler and multi basiler, male patients of pausi basiler, female patients of pausi basiler, total number of pausi basiler patients, RFT number of pausi basiler on

men, RFT percentage of pausi basiler on men, RFT number of pausi basiler on women, RFT percentage of pausi basiler on women, total RFT of pausi basiler, total RFT percentage of pausi basiler, male patients of multi basiler, female patients of multi basiler, total patients of multi basiler, RFT number of multi basiler on men, RFT percentage of multi basiler on men, total RFT of mulit basiler, RFT percentage of multi basiler on women, total RFT of multi basiler and total RFT percentage of multi basiler.

7. DHF, which includes cases of male DHF, female DHF cases, total cases of DHF, DHF cases of male deaths, DFH cases of female death, total death of DHF cases, percentage of CHF DHF on men, percentage of CFR DHF on women, and total percentage of CFR DHF.
8. Measles, which includes male suspected patients, female suspected patients, total suspected patients, number of measles immunization on male, percentage of infant immunization against measles on male, number of measles immunization on female, percentage of infant immunization against measles on female, total of baby measles immunization, total percentage of baby measles immunization.
9. HIV-AIDS, which includes HIV-positive male, HIV-positive female, total HIV, HIV proportion, AIDS on male, AIDS on female, total AIDS, AIDS proportion, number of HIV-AIDS deaths on male, number of HIV-AIDS deaths on female, total HIV-AIDS deaths.
10. Malaria which includes male suspects, females suspects, total malaria suspects, male deaths, female deaths, total deaths, percentage of male CFR, percentage of female CFR and total CFR percentage.

D. Physical Data Model (PDM)

PDM is a generated ERD from CDM that aims to analyze the tables needed on tropical disease web-GIS. All the layers are connected to the geometry entity column so that the OID appears to be the foreign key of each entity as shown in Figure 8 below,

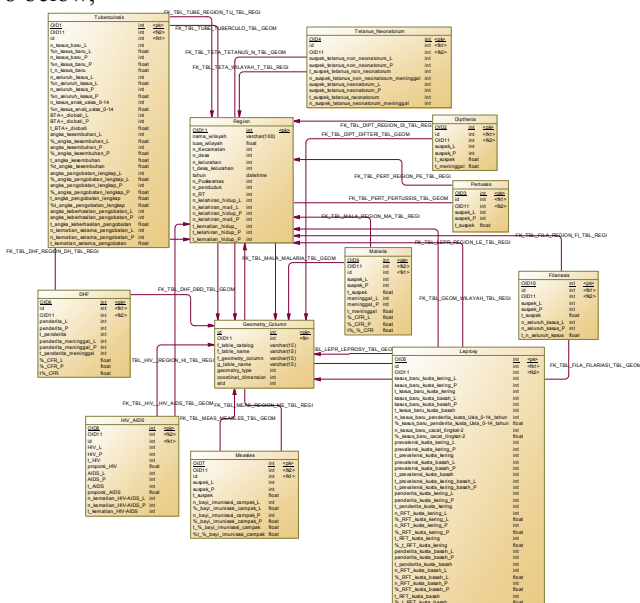


Fig.8. Generate Data from CDM to PDM

IV. CONCLUSION

The result of database design formed from spatial data and attribute data that identified by doing the process of: (1) Geoprocessing layer, (2) Digitization of the layer which is then processed into buffer, union, and intersect process to generate overlay layer and (3) Overlay layer using MAUT method has formed with connection to database. After the layer of geoprocessing results has formed, the programming is given to the layer to generate a prototype of Web-GIS which is ready for use. The final stage is to make sure that Web-GIS system is perfect by evaluating the system through trial and error process.

ACKNOWLEDGMENT

This paper is the result of the first year of Competitive is an Applied Product Research funded by Kopertis Region VII, East Java, by Ministry of Education and Culture, in accordance with the Agreement on Research Grant Implementation of the Private University Faculty Members– Kopertis VII in 2017, Number 005/SP2H/K2/KM/2017, on Mei 4th, 2017. The result of the mapping will be a reference for further research in 2018 using web-GIS technology.

REFERENCES

- [1] “Profil Kesehatan Jawa Timur 2011-2015”, Dinas Kesehatan Provinsi Jawa Timur 2013-2016
- [2] Widoyo, “Penyakit tropis, epidemiologi, penularan, pencegahan dan pemberantasannya”, Penerbit Erlangga, 2005
- [3] Anik Vega Vitianingsih, Dwi Cahyono, Achmad Choiron, “Web-Geographic Information System Modelling For Tropical Diseases-Prone Areas: A Case Study Of East Java Province”, Proceeding International Conference Enhancing Multidisciplinary Research And Innovation For Indonesia’s Future, ISBN 978-602-70736-8-6, pp.21, 2017
- [4] Hui Luan, Jane Law, “Web GIS-Based Public Health Surveillance System Asystematic Review”, Journal Of Geo-Information, ISSN 2220-9960,3,pp481-506, 2014
- [5] Tromp. S.W. Biometeorology, “The Impact of the Weather and Climate on Humans and their Environment (Animal and Plant)”, Heyden & Sons Ltd. London. 1980.
- [6] Seng. S.B., Chong, A.K., and Moore, “A Geostatistical Modelling, Analysis and Mapping of Epidemiology of Dengue Fever in Johor State, Malaysia”, The 17th Annual Colloquium of the Spatial Information Research Centre University of Otago, Dunedin, New Zealand, 2005
- [7] Weber M, Borcherding K., “Behavioral influences on weight judgments in multiple attribute decision making”. European Journal of Operational Research, 67:1–12, 1993
- [8] M. Wang, S.-J. Lin, Y.-C. Lo, “The comparison between MAUT and PROMETHEE”, Industrial Engineering and Engineering Management (IEEM), 2010 IEEE International Conference, pp. 753-757, 2010.
- [9] Malczewski J., “GIS-based land-use suitability analysis: a critical overview”, Progress in Planning, 62(1), pp. 3–65, 2004
- [10] Nijkamp P. “Multidimensional spatial data and decision analysis”, Wiley, Chichester, West Sussex, 1979
- [11] Chakhar S. and V. Mousseau, “Spatial multicriteria decision making”, In: Shekhar S. and H. Xiong, Eds. Encyclopedia of GIS, Springer-Verlag. New York, pp. 747–753, 2008.