

4th **ICOIACT** 2021

International Conference on Information
and Communications Technology



UNIVERSITAS
AMIKOM
YOGYAKARTA

PROCEEDING

**The Role of AI in Health and
Social Revolution in Turbulence Era**

Indonesia, August 30, 2021

2021 4th International Conference on Information and Communications Technology (ICOIACT) | 978-1-6654-3394-5/21/\$31.00 ©2021 IEEE | DOI: 10.1109/ICOIACT53268.2021.9563983

ISBN: 978-1-6654-3394-5



2021 4th International Conference on Information and Communications Technology (ICOI ACT) took place 30 August 2021 virtually.



IEEE catalog number: CFP21L86-ART
ISBN: 978-1-6654-3394-5

Copyright and Reprint Permission: Abstracting is permitted with credit to the source. Libraries are permitted to photocopy beyond the limit of U.S. copyright law for private use of patrons those articles in this volume that carry a code at the bottom of the first page, provided the per-copy fee indicated in the code is paid through Copyright Clearance Center, 222 Rosewood Drive, Danvers, MA 01923. For reprint or republication permission, email to IEEE Copyrights Manager at pubs-permissions@ieee.org. All rights reserved. Copyright © 2021 by IEEE.

Steering Committee

1. Dr.-Ing. Wahyudi Hasbi, S.Si, M.Kom. (Chair IEEE Indonesia Section)
2. Prof. Dr. Ir. Gamantyo Hendranto, Ph.D. (Vice Chair IEEE Indonesia Section)
3. Prof. Dr. M. Suyanto, M.M.
4. Drs. Bambang Sudaryatno, MM.
5. Eny Nurnilawati, SE., MM.
6. Dr. Achmad Fauzi, SE., MM.
7. Hanif Al Fatta, S.Kom., M.Kom.

Organizing Committee

General Chair:

Prof. Dr. Kusrini, M.Kom.

Secretary & Treasurer:

Sumarni Adi, S.Kom., M.Cs.

Publication & TPC Chair:

1. Dr. Arief Setyanto, S.Si., MT.
2. Ferry Wahyu Wibowo, S.Si., M.Cs.
3. Dr. Alva Hendi Muhammad, S.T., M.Eng.

Registration Chair:

1. Akhmad Dahlan, M.Kom.
2. Yoga Pristyanto, S.Kom., M.Eng.
3. Rifda Faticha Alfa Aziza, M.Kom.

IT Support:

Directorate of Innovation Center

Support Team:

AMIKOM Student Branch

Author	Session	Start page	Title
A			
Adi, Hajar	2E.5	304	<i>Comparison of Keras Optimizers for Earthquake Signal Classification Based on Deep Neural Networks</i>
Ahmad, Tohari	2A.7	164	<i>Rank-Based Univariate Selection for Intrusion Detection System</i>
Akbar, Muhamad	1B.2	41	<i>Analysis of Digital Population Services for the Poor in Palembang City Using the Information Technology Infrastructure Library (ITIL) Framework</i>
Alam, Md. Golam Rabiul	1C.6	98	<i>Ambient Assisted Living for Elderly Care and Monitoring in COVID-19 Pandemic</i>
Ali, Roaa	2A.1	131	<i>Performance analysis of NOMA using different types receivers</i>
Alsyabani, Omar Muhammad Altoumi	1A.2	5	<i>Intrusion Detection System Model Based on Gated Recurrent Unit to Detect Anomaly Traffic</i>
Am, Tamrizal	2C.4	227	<i>Decision Support System of Stock Selection Using Promethee Method</i>
Anggraeni, Martianda	1A.3	11	<i>Field Measurement of Digital Terrestrial Television DVB-T2 on Urban Area: Validation of Link Budget Model using GIS</i>
Anisah, Ida	1A.3	11	<i>Field Measurement of Digital Terrestrial Television DVB-T2 on Urban Area: Validation of Link Budget Model using GIS</i>
Antoni, Darius	1B.2	41	<i>Analysis of Digital Population Services for the Poor in Palembang City Using the Information Technology Infrastructure Library (ITIL) Framework</i>
Apriono, Catur	1A.1	1	<i>Dissipation of Terahertz Wave Radiation on A bolometer Connected with A Cross Bowtie Antenna</i>
Areni, Intan Sari	2E.2	290	<i>Reducing Area Recognition for Vehicle Model Classification using Car's Front Side</i>
Ariatmanto, Dhani	2D.2	252	<i>Comparing Holt-Winter and Multi Layer Perceptron in Forecasting The Amount of Rice Supply from Cirebon</i>
Artharipalayam Palanisamy, Povendhan	2C.1	209	<i>Towards a Cloud-Based System Architecture for Drain Inspection Robots</i>
Ashari, Wahid	1C.5	92	<i>Comparative Study of Kalman Filter and H infinity Filter for Current Sensorless Battery Health Analysis</i>
Aswin, Aswin	2B.5	192	<i>The Recommendation System for Increasing the Independence of Micro, Small and Medium Enterprises (MSMEs) Using the Normalized Rating Frequency (NRF) Method</i>
Ayoob, Saad	2A.1	131	<i>Performance analysis of NOMA using different types receivers</i>
	2A.4	149	<i>Modeling and evaluating performance for Long-Term Evaluation networks in a part of Mosul city</i>
B			
Bhowmick, Shovon	1C.6	98	<i>Ambient Assisted Living for Elderly Care and Monitoring in COVID-19 Pandemic</i>
Biswas, Tausif	1D.5	125	<i>CRAM: A Credit Risk Assessment Model by Analyzing Different Machine Learning Algorithms</i>
Borusu, Charan	2C.1	209	<i>Towards a Cloud-Based System Architecture for Drain Inspection Robots</i>

Satya Chandra Sairam			
Budiana, Eko	2B.2	175	<i>Developing from 2D to 3D Droplet Modeling and Simulation Using Lattice Boltzmann Method (LBM)</i>
Bustamin, Anugrayani	2E.2	290	<i>Reducing Area Recognition for Vehicle Model Classification using Car's Front Side</i>
C			
Chan, Ka-Hou	2E.4	299	<i>Optimization and Implementation of Adaptation Rate in VVC</i>
Chandra, Alex	1C.3	80	<i>Experiment on Distance Measurement Using Single Camera</i>
D			
Dahlan, Akhmad	2A.6	160	<i>Comparison of Naïve Bayes Algorithm Model Combinations with Term Weighting Techniques in Sentiment Analysis</i>
Daniati, Erna	2D.3	256	<i>Recommendations for Choosing a Place to Stay in the Greater Malang Area Using SAW and TOPSIS</i>
	2D.5	268	<i>TOPSIS in Decision-Making Framework Based on Twitter Sentiment Analysis</i>
Darari, Fariz	2D.4	262	<i>Data Completeness Impact on Deep Learning Based Explainable Recommender Systems</i>
Deendarlianto, Deendarlianto	2B.2	175	<i>Developing from 2D to 3D Droplet Modeling and Simulation Using Lattice Boltzmann Method (LBM)</i>
Dewan, Ifroim	1D.5	125	<i>CRAM: A Credit Risk Assessment Model by Analyzing Different Machine Learning Algorithms</i>
E			
Elsa, Corry	2D.1	248	<i>A Cross-Cultural Adaptation of Chatbot Usability Questionnaire (CUQ): Indonesian Version</i>
F			
Fatta, Hanif	2B.4	186	<i>Analysis on the Use of Declarative and Pull-based Deployment Models on GitOps Using Argo CD</i>
Faza, Ahmad	1B.5	59	<i>Challenges and Opportunities of Online Learning Implementation During COVID-19 Pandemic: A Lecturers' Perspective</i>
Febiyani, Eva	1A.3	11	<i>Field Measurement of Digital Terrestrial Television DVB-T2 on Urban Area: Validation of Link Budget Model using GIS</i>
Ferdous, Tarek	1C.6	98	<i>Ambient Assisted Living for Elderly Care and Monitoring in COVID-19 Pandemic</i>
G			
Gandhi, Arfive	2A.5	154	<i>Analysis of CSIRT Services in Facing Cyber Security Challenges In Indonesia</i>
H			
Hadinegoro, Arifiyanto	2B.2	175	<i>Developing from 2D to 3D Droplet Modeling and Simulation Using Lattice Boltzmann Method (LBM)</i>
Haidar, Muhammad	2A.5	154	<i>Analysis of CSIRT Services in Facing Cyber Security Challenges In Indonesia</i>
Hakim, Deni Lukmanul	2D.4	262	<i>Data Completeness Impact on Deep Learning Based Explainable Recommender Systems</i>

Harsha, Harsha	1A.5	23	<i>CFO Estimation for Multi-user Uplink SC-FDMA Using Null Subcarrier and Deterministic Approach</i>
Hartanto, Anggit	2C.5	233	<i>Banjarese Chatbot Using Seq2Seq Model</i>
Dwi	1A.2	5	<i>Intrusion Detection System Model Based on Gated Recurrent Unit to Detect Anomaly Traffic</i>
Hayaty, Mardhiya	1D.2	108	<i>Classification of Brain Tumour MRI Images using Efficient Network</i>
Herdiansyah, Muhammad Izman	1B.2	41	<i>Analysis of Digital Population Services for the Poor in Palembang City Using the Information Technology Infrastructure Library (ITIL) Framework</i>
Heryadi, Yaya	2D.7	280	<i>Diabetes Classification Using Support Vector Machine: Binary Classification Model</i>
	2C.6	239	<i>Foreign Exchange Prediction Using Machine Learning Approach: A Pilot Study</i>
Hidayat, Wahyu	2D.2	252	<i>Comparing Holt-Winter and Multi Layer Perceptron in Forecasting The Amount of Rice Supply from Cirebon</i>
Hossain, Muhammad	1D.5	125	<i>CRAM: A Credit Risk Assessment Model by Analyzing Different Machine Learning Algorithms</i>
Hutagalung, Gunawan	2C.2	215	<i>Narrow-Band Internet of Things for Smart Metering Infrastructure in Urban Area: Medan City Case</i>

I

Ichii, Kazuhito	1A.6	29	<i>Utilization of remote sensing data for thermal comfort estimation in the coastal urban of Jakarta</i>
Im, Sio	2E.4	299	<i>Optimization and Implementation of Adaptation Rate in VVC</i>
Indarto, Indarto	2B.2	175	<i>Developing from 2D to 3D Droplet Modeling and Simulation Using Lattice Boltzmann Method (LBM)</i>
Indrabayu, Indrabayu	2E.2	290	<i>Reducing Area Recognition for Vehicle Model Classification using Car's Front Side</i>
Ivander, Joshua	1C.3	80	<i>Experiment on Distance Measurement Using Single Camera</i>

J

Ji Xian, Loke	2C.1	209	<i>Towards a Cloud-Based System Architecture for Drain Inspection Robots</i>
---------------	------	-----	--

K

Karim, Mynul	1D.5	125	<i>CRAM: A Credit Risk Assessment Model by Analyzing Different Machine Learning Algorithms</i>
Karna, Nyoman	2B.1	169	<i>Decision Tree-Based Bok Choy Growth Prediction Model for Smart Farm</i>
Kharisma, Rizqi Sukma	2A.6	160	<i>Comparison of Naïve Bayes Algorithm Model Combinations with Term Weighting Techniques in Sentiment Analysis</i>
Konduri, Sriniketh	2C.1	209	<i>Towards a Cloud-Based System Architecture for Drain Inspection Robots</i>
Koppaka, Ganesh Sai Apuroop	2C.1	209	<i>Towards a Cloud-Based System Architecture for Drain Inspection Robots</i>
Koprawi, Muhammad	1C.5	92	<i>Comparative Study of Kalman Filter and H infinity Filter for Current Sensorless Battery Health Analysis</i>
Kumar, Sushant	1A.5	23	<i>CFO Estimation for Multi-user Uplink SC-FDMA Using Null Subcarrier and Deterministic Approach</i>
Kurniawan, Mei	2B.7	203	<i>Comparative Analysis of CLAHE and AHE on Application of CNN Algorithm</i>

			<i>in the Detection of Covid-19 Patients</i>
Kurniawan, Rio	2B.5	192	<i>The Recommendation System for Increasing the Independence of Micro, Small and Medium Enterprises (MSMEs) Using the Normalized Rating Frequency (NRF) Method</i>
Kusniadi, Imam	1D.1	104	<i>Fake Video Detection using Modified XceptionNet</i>
Kusrini, Kusrini	2E.1	285	<i>Impact of Augmentation on Batik Classification using Convolution Neural Network and K-Neareast Neighbor</i>
	1D.4	119	<i>Efficient Deep Learning Architecture for Facemask Detection</i>
Kuswanto, Jeki	1C.5	92	<i>Comparative Study of Kalman Filter and H infinity Filter for Current Sensorless Battery Health Analysis</i>
Kyung, Richard	2D.6	274	<i>Novel classification method of plastic wastes with optimal hyperparameter tuning of Inception_ResnetV2</i>
L			
Laksito, Arif	1D.2	108	<i>Classification of Brain Tumour MRI Images using Efficient Network</i>
Lee, Sahng-Won	2D.6	274	<i>Novel classification method of plastic wastes with optimal hyperparameter tuning of Inception_ResnetV2</i>
Lestari, Sri	2B.5	192	<i>The Recommendation System for Increasing the Independence of Micro, Small and Medium Enterprises (MSMEs) Using the Normalized Rating Frequency (NRF) Method</i>
	2D.7	280	<i>Diabetes Classification Using Support Vector Machine: Binary Classification Model</i>
Lukas, Lukas	2C.6	239	<i>Foreign Exchange Prediction Using Machine Learning Approach: A Pilot Study</i>
M			
Madrin, Febby Purnama	1C.1	69	<i>Reliability Improvement of UWB Tracker for Hospital Asset Management System</i>
Majhi, Sudhan	1A.5	23	<i>CFO Estimation for Multi-user Uplink SC-FDMA Using Null Subcarrier and Deterministic Approach</i>
Marbun, Hendry	1A.1	1	<i>Dissipation of Terahertz Wave Radiation on A bolometer Connected with A Cross Bowtie Antenna</i>
	2A.3	143	<i>Spatial data modeling for mapping of slum region using multi-attribute utility theory method</i>
Marco, Robert	2A.2	137	<i>Geographical Information System For Mapping Of Settlements Land Potency Index</i>
	2A.2	137	<i>Geographical Information System For Mapping Of Settlements Land Potency Index</i>
Maukar, Anastasia	2A.3	143	<i>Spatial data modeling for mapping of slum region using multi-attribute utility theory method</i>
Mayasari, Ratna	2B.1	169	<i>Decision Tree-Based Bok Choy Growth Prediction Model for Smart Farm</i>
Mohan, Rajesh Elara	2C.1	209	<i>Towards a Cloud-Based System Architecture for Drain Inspection Robots</i>
Momtaz, Raihan	1C.6	98	<i>Ambient Assisted Living for Elderly Care and Monitoring in COVID-19 Pandemic</i>
Mulhaq, Perdana	2E.6	309	<i>Face Mask Detection on Facial Images Using Convolutional Neural Network</i>

Mustika, I Wayan	2E.5	304	<i>Comparison of Keras Optimizers for Earthquake Signal Classification Based on Deep Neural Networks</i>
Muttafi'ah, Muttafi'ah	2A.6	160	<i>Comparison of Naïve Bayes Algorithm Model Combinations with Term Weighting Techniques in Sentiment Analysis</i>
N			
Najib, Faisal	2E.5	304	<i>Comparison of Keras Optimizers for Earthquake Signal Classification Based on Deep Neural Networks</i>
Nambo, Hidetaka	1B.1	35	<i>User Satisfaction Analysis Model of Google Classroom for Online Lectures in Covid-19 Pandemic</i>
Nashiruddin, Muhammad Imam	2C.2	215	<i>Narrow-Band Internet of Things for Smart Metering Infrastructure in Urban Area: Medan City Case</i>
	2C.3	221	<i>Long Range Wide Area Network Deployment for Smart Metering Infrastructure in Urban Area: Case Study of Bandung City</i>
Nathaniel, Timotius	1C.2	75	<i>Smart Light Control Using Thermal Sensor As Human Presence Detection</i>
Ng Terntzer, Dylan	2C.1	209	<i>Towards a Cloud-Based System Architecture for Drain Inspection Robots</i>
Nucifera, Fitria	1A.6	29	<i>Utilization of remote sensing data for thermal comfort estimation in the coastal urban of Jakarta</i>
Nugraha, Muhammad Adam	2C.2	215	<i>Narrow-Band Internet of Things for Smart Metering Infrastructure in Urban Area: Medan City Case</i>
	2C.3	221	<i>Long Range Wide Area Network Deployment for Smart Metering Infrastructure in Urban Area: Case Study of Bandung City</i>
Nugroho, Hanung	2E.3	295	<i>Convolutional Neural Network for Classifying Retinal Diseases from OCT2017 Dataset</i>
Nurfauzi, Rizki	2E.3	295	<i>Convolutional Neural Network for Classifying Retinal Diseases from OCT2017 Dataset</i>
P			
Pakpahan, Jontri	1B.3	47	<i>Critical Success Factors of IT Outsourcing in Indonesian Public Sectors: A Case Study at Employment Social Security Agency</i>
Pangestu, Pandu	1B.4	53	<i>E-Readiness to Use Tegal City Small Medium Enterprise in the Information Technology Adoption Process Using the technology organization environment Model</i>
Parlindungan Hasibuan, Ivan Daniel	1C.4	86	<i>Artificial Neural Network in Classification of Human Blood Cells Using Faster R-CNN</i>
Permana, Adhitya	1D.4	119	<i>Efficient Deep Learning Architecture for Facemask Detection</i>
Phankokkruad, Manop	1D.3	114	<i>Evaluation of Deep Transfer Learning Models in Glaucoma Detection for Clinical Application</i>
Prasetyaningrum, Putri Taqwa	2B.3	180	<i>Imbalanced Class handling and Classification on Educational Dataset</i>
Pratama, Irfan	2B.3	180	<i>Imbalanced Class handling and Classification on Educational Dataset</i>
Pratama, Yan	2B.5	192	<i>The Recommendation System for Increasing the Independence of Micro, Small and Medium Enterprises (MSMEs) Using the Normalized Rating Frequency (NRF) Method</i>

Pristyanto, Yoga	2B.3	180	<i>Imbalanced Class handling and Classification on Educational Dataset</i>
Puspitarini, Erri Wahyu	2A.2	137	<i>Geographical Information System For Mapping Of Settlements Land Potency Index</i>
	2A.3	143	<i>Spatial data modeling for mapping of slum region using multi-attribute utility theory method</i>
Putra, Panca O. Hadi	1B.5	59	<i>Challenges and Opportunities of Online Learning Implementation During COVID-19 Pandemic: A Lecturers' Perspective</i>
	2D.1	248	<i>A Cross-Cultural Adaptation of Chatbot Usability Questionnaire (CUQ): Indonesian Version</i>
Putra, Wahyu Sukestyastama	1C.5	92	<i>Comparative Study of Kalman Filter and H infinity Filter for Current Sensorless Battery Health Analysis</i>

Q

Qinthara, Dafin	1C.2	75	<i>Smart Light Control Using Thermal Sensor As Human Presence Detection</i>
-----------------	------	----	---

R

Rabiha, Sucianna	2D.7	280	<i>Diabetes Classification Using Support Vector Machine: Binary Classification Model</i>
Rahman, Yeaminur	1D.5	125	<i>CRAM: A Credit Risk Assessment Model by Analyzing Different Machine Learning Algorithms</i>
Ramadoni, Ramadoni	2B.4	186	<i>Analysis on the Use of Declarative and Pull-based Deployment Models on GitOps Using Argo CD</i>
Riasasi, Widiyana	1A.6	29	<i>Utilization of remote sensing data for thermal comfort estimation in the coastal urban of Jakarta</i>
Roostandi, Mario	1C.2	75	<i>Smart Light Control Using Thermal Sensor As Human Presence Detection</i>

S

Sadikin, Mohammad Fal	2B.6	197	<i>Machine Learning for Security and Security for Machine Learning: A Literature Review</i>
Safitri, Winda	2A.7	164	<i>Rank-Based Univariate Selection for Intrusion Detection System</i>
Samir, Mahmood	2A.4	149	<i>Modeling and evaluating performance for Long-Term Evaluation networks in a part of Mosul city</i>
	1B.5	59	<i>Challenges and Opportunities of Online Learning Implementation During COVID-19 Pandemic: A Lecturers' Perspective</i>
Santoso, Harry	2D.1	248	<i>A Cross-Cultural Adaptation of Chatbot Usability Questionnaire (CUQ): Indonesian Version</i>
	1D.4	119	<i>Efficient Deep Learning Architecture for Facemask Detection</i>
Saputra, Andhy Panca	1D.4	119	<i>Efficient Deep Learning Architecture for Facemask Detection</i>
Saputra, Dany	1C.3	80	<i>Experiment on Distance Measurement Using Single Camera</i>
Sasongko, Theopilus Bayu	1D.4	119	<i>Efficient Deep Learning Architecture for Facemask Detection</i>
Senjaya, Aloysius	1C.3	80	<i>Experiment on Distance Measurement Using Single Camera</i>
Septiyanti, Reni	1B.2	41	<i>Analysis of Digital Population Services for the Poor in Palembang City Using the Information Technology Infrastructure Library (ITIL) Framework</i>
Setiawan, Bambang	2C.5	233	<i>Banjarese Chatbot Using Seq2Seq Model</i>
Setyanto, Arief	1D.4	119	<i>Efficient Deep Learning Architecture for Facemask Detection</i>

	1D.1	104	<i>Fake Video Detection using Modified XceptionNet</i>
Shihab, Muhammad Rifki	1B.3	47	<i>Critical Success Factors of IT Outsourcing in Indonesian Public Sectors: A Case Study at Employment Social Security Agency</i>
Singh, Shivani	1A.5	23	<i>CFO Estimation for Multi-user Uplink SC-FDMA Using Null Subcarrier and Deterministic Approach</i>
Siswanto, Boby	1C.2	75	<i>Smart Light Control Using Thermal Sensor As Human Presence Detection</i>
Siswanto, Boby	1B.6	65	<i>Low-Cost IoT Devices for Measuring Carbon Dioxide Inside A Classroom with Plants without Air Ventilation</i>
Sucahyo, Yudho	2A.5	154	<i>Analysis of CSIRT Services in Facing Cyber Security Challenges In Indonesia</i>
	1A.4	17	<i>Influential Factors In Adopting Blockchain Technology for eGovernment: A Systematic Review of Empirical Research</i>
Sucipto, Sucipto	2D.3	256	<i>Recommendations for Choosing a Place to Stay in the Greater Malang Area Using SAW and TOPSIS</i>
Sudimanto, Sudimanto	2C.6	239	<i>Foreign Exchange Prediction Using Machine Learning Approach: A Pilot Study</i>
Sugiarto, Dedy	2D.2	252	<i>Comparing Holt-Winter and Multi Layer Perceptron in Forecasting The Amount of Rice Supply from Cirebon</i>
Sukardi, Teddy	2A.5	154	<i>Analysis of CSIRT Services in Facing Cyber Security Challenges In Indonesia</i>
Sulyono, Sulyono	2B.5	192	<i>The Recommendation System for Increasing the Independence of Micro, Small and Medium Enterprises (MSMEs) Using the Normalized Rating Frequency (NRF) Method</i>
Supriyadi, Yose	1A.4	17	<i>Influential Factors In Adopting Blockchain Technology for eGovernment: A Systematic Review of Empirical Research</i>
Supriyanto, Eko	1C.1	69	<i>Reliability Improvement of UWB Tracker for Hospital Asset Management System</i>
Susilo, Aldi	2B.1	169	<i>Decision Tree-Based Bok Choy Growth Prediction Model for Smart Farm</i>
Sutrisno, Arjun	2E.2	290	<i>Reducing Area Recognition for Vehicle Model Classification using Car's Front Side</i>
Suyanto, Suyanto	2E.6	309	<i>Face Mask Detection on Facial Images Using Convolutional Neural Network</i>
Syafi'ah, Nailis	1B.1	35	<i>User Satisfaction Analysis Model of Google Classroom for Online Lectures in Covid-19 Pandemic</i>

T

Tahyudin, Imam	1B.1	35	<i>User Satisfaction Analysis Model of Google Classroom for Online Lectures in Covid-19 Pandemic</i>
Trimakno, Dandhi	2E.1	285	<i>Impact of Augmentation on Batik Classification using Convolution Neural Network and K-Neareast Neighbor</i>
Turjo, Aquib	1D.5	125	<i>CRAM: A Credit Risk Assessment Model by Analyzing Different Machine Learning Algorithms</i>

U

Umri, Buyut	2B.7	203	<i>Comparative Analysis of CLAHE and AHE on Application of CNN Algorithm in the Detection of Covid-19 Patients</i>
Utama, Hastari	2D.3	256	<i>Recommendations for Choosing a Place to Stay in the Greater Malang Area Using SAW and TOPSIS</i>

	2D.5	268	<i>TOPSIS in Decision-Making Framework Based on Twitter Sentiment Analysis</i>
	2B.4	186	<i>Analysis on the Use of Declarative and Pull-based Deployment Models on GitOps Using Argo CD</i>
Utami, Ema	1A.2	5	<i>Intrusion Detection System Model Based on Gated Recurrent Unit to Detect Anomaly Traffic</i>
	2B.7	203	<i>Comparative Analysis of CLAHE and AHE on Application of CNN Algorithm in the Detection of Covid-19 Patients</i>
	2C.5	233	<i>Banjarese Chatbot Using Seq2Seq Model</i>
Utomo, Rio Guntur	1B.4	53	<i>E-Readiness to Use Tegal City Small Medium Enterprise in the Information Technology Adoption Process Using the technology organization environment Model</i>

V

Verawati, Ike	1C.4	86	<i>Artificial Neural Network in Classification of Human Blood Cells Using Faster R-CNN</i>
	2A.2	137	<i>Geographical Information System For Mapping Of Settlements Land Potency Index</i>
Vitianingsih, Anik	2A.3	143	<i>Spatial data modeling for mapping of slum region using multi-attribute utility theory method</i>

W

	2A.2	137	<i>Geographical Information System For Mapping Of Settlements Land Potency Index</i>
Wati, Seftin	2A.3	143	<i>Spatial data modeling for mapping of slum region using multi-attribute utility theory method</i>
	2D.7	280	<i>Diabetes Classification Using Support Vector Machine: Binary Classification Model</i>
Wibowo, Antoni	2C.6	239	<i>Foreign Exchange Prediction Using Machine Learning Approach: A Pilot Study</i>
Wibowo, Ferry Wahyu	2C.7	243	<i>Electronic Nose in Classification of Gas Sensor Array Detection Through Flow Modulation</i>
Widayat, Wahyu	2D.3	256	<i>Recommendations for Choosing a Place to Stay in the Greater Malang Area Using SAW and TOPSIS</i>
Wihayati, Wihayati	2C.7	243	<i>Electronic Nose in Classification of Gas Sensor Array Detection Through Flow Modulation</i>
Wiranda, Nuruddin	2B.6	197	<i>Machine Learning for Security and Security for Machine Learning: A Literature Review</i>

Y

Yamamoto, Yuhei	1A.6	29	<i>Utilization of remote sensing data for thermal comfort estimation in the coastal urban of Jakarta</i>
	2C.4	227	<i>Decision Support System of Stock Selection Using Promethee Method</i>
Yaqin, Ainul	2D.2	252	<i>Comparing Holt-Winter and Multi Layer Perceptron in Forecasting The Amount of Rice Supply from Cirebon</i>
Yasirandi, Rahmat	1B.4	53	<i>E-Readiness to Use Tegal City Small Medium Enterprise in the Information Technology Adoption Process Using the technology organization</i>

			<i>environment Model</i>
Yuana, Kumara	2B.2	175	<i>Developing from 2D to 3D Droplet Modeling and Simulation Using Lattice Boltzmann Method (LBM)</i>
Yulmaini, Yulmaini	2B.5	192	<i>The Recommendation System for Increasing the Independence of Micro, Small and Medium Enterprises (MSMEs) Using the Normalized Rating Frequency (NRF) Method</i>

Z

Zhaputri, Anggi	1D.2	108	<i>Classification of Brain Tumour MRI Images using Efficient Network</i>
-----------------	------	-----	--

Geographical Information System For Mapping Of Settlements Land Potential Index

Robert Marco
Department of Informatics
Universitas Amikom Yogyakarta
Yogyakarta, Indonesia
robertmarco@amikom.ac.id

Erri Wahyu Puspitarini
Department of Informatics Engineering
STMIK Yadika Bangil
Pasuruan, Indonesia
www.erri@stmik-yadika.ac.id

Anik Vega Vitianingsih
Department of Informatics
Universitas Dr. Soetomo
Surabaya, Indonesia
vega@unitomo.ac.id

Seftin Fitri Ana Wati
Department of Information System
UPN Veteran Jawa Timur
Surabaya, Indonesia
seftin.fitri.si@upnjatim.ac.id

Anastasia Lidya Maukar
Department of Industrial Engineering
President University
Bekasi, Indonesia
almaukar@president.ac.id

Abstract— Rapid population growth is a problem for all regions, especially in big cities. Because uncontrolled population growth will result in an increase in the need for housing, the amount of land needed for settlements will also increase. This paper presents spatial data modeling to determine the suitability of settlements on land with the land suitability potential index (LSPI) approach based on geographic information system (GIS) technology. Mapping the suitability of residential land using the LSPI approach is based on multi-criteria parameters of topography/relief, lithology, type of soil, hydrology, and disaster vulnerability. The private dataset from the Department of Regional Development Planning Agency of Jepara district, is the subject of our analysis. The results show that the superiority of the area that will produce a layer of information on mapping land suitability for settlements has a good land suitability classification category value with a land suitability potential index value of 25. The results of this trial state that this method can produce settlement land suitability maps, which are classified into three types, namely non-suitable, low-suitable, and suitable.

Keywords—Spatial data modeling, geoprocessing, layer, land suitability potential index, GIS

I. INTRODUCTION

Rapid population growth and massive migration demand land availability as one of the most important indicators, especially in big cities [1]. Meanwhile, the limited availability of settlement land creates new problems [2]. An unbalanced comparison between the volume of population growth and the limited availability of settlement land causes land conversion problems or changes in the function of the land area from its initial function. This is due to the uneven distribution of land for appropriate settlements. In addition, the development of unsuitable settlements is one of the factors that increases the number of slum settlements.

Wei et al (2013) stated several environmental suitability criteria for settlements, such as: slope, aspect, degree of land surface relief, land use, vegetation index, hydrology, and climate, as a model of the human settlements environmental index (HEI) [3][4]. Meanwhile, Wilhelm (1992) states the need for environmental planning specifically, by mentioning aspects such as air and water pollution, waste disposal, degradation and lack of green areas [5]. However, often more territory was occupied through the informal

occupation process than was formally planned [6]. Meanwhile, the need for natural resources such as forests, grasslands, wetlands and agricultural land has been converted into settlements. This is an important basis for determining the spatial distribution pattern of the population in a particular area [7].

Decision problems involving geographic data are referred to as geographic or spatial decision problems [8]. The spatial data of settlements land is the basis for studying the evolution of the spatial pattern of settlements and is therefore important for obtaining accurate results [9]. Thus, understanding the extent of spatial data and the geographic distribution of human settlements is fundamentally important for landscape management [10]. The use of spatial data that is processed into information can be used to analyze the needs of geospatial data as a decision-making system [8]. Spatial decision problems often require many feasible alternatives that can be evaluated based on several criteria [11].

Decision making and problem solving rely on information and communication technologies as well as the exchange of ideas and information, which are necessary to address a particular decision problem. Spatial decision problems often require a large number of alternatives to be evaluated against several criteria. Spatial decisions are multi-criteria [12]. Geographic information systems (GIS) are designed to address this problem. It has the ability to map and analyze spatial data with spatial analysis as well as time analysis (temporal analysis), which results in an integrated analysis covering all aspects [12][13][14]. Spatial decision problems often require many feasible alternatives that can be evaluated against several criteria [15]. Spatial analysis is easier with maps because it can produce deeper studies [16].

Spatial data modeling is the process of using data resulting from spatial analysis to determine decisions. The resulting process includes geocoding and mapping to produce a decision-making system. Accroding to Góirán et al (2012), detected vegetation changes associated with land-use with the spectral vegetation index SATVI (soil adjusted total vegetation index), which were not detected with the normalized difference vegetation index (NDVI) and soil

adjusted vegetation index (SAVI) [17]. Analyzing land availability and suitable land suitability using multicriteria analysis (MCA) [18]. Mapping of agricultural land availability using fuzzy logic modeling taking into account climate and land classification [19]. analysis of site selection with GIS based Multi-criteria decision analysis (MCDA) [12]. An integrated land suitability potential (LSP) index was computed considering the contribution of various parameters of land suitability, and was categorized as good, fair, moderate, average, poor, and not suitable by adopting the logical criteria [20]. Presented an approach to calculate the theoretical and realistic potential of rural settlement consolidation (RSC) [21]. Spatial metrics combined with spectral information extracted from very high resolution (VHR) imagery allow quantification of general spatial characteristics of urban areas, as well as specific morphological features (i.e., density, size, and pattern) of unplanned settlements using the unplanned settlement index (USI) [22].

Based on previous research, the use of geographic information system technology through spatial analysis to identify the suitability of settlement land. Multicriteria spatial decision support systems have been used in a large number of disciplines, such as site planning, urban and rural planning, and distribution of limited resources [23][24]. Meanwhile, Niekerk et al (2016), combined multi-criteria decision making, GIS and planning support systems to generate a number of growth scenarios for settlements using ArcGIS software [25]. Our study will analyze spatial data using the land suitability potential index (LSPI) approach to assessing the suitability of settlements land to determine the weight value of each criterion based on topography/relief, lithology, type of soil, hydrology and disaster vulnerability parameters [3][4][20]. Before using this method, we assigned a weight to each criterion. Furthermore, the calculation process is carried out using the LSPI method. This study contributes to providing information related to mapping the suitability of settlement land, which will result in layers of information on settlement land that is non-suitable, low-suitable, and suitable. Then the results of the spatial map information are entered into the ArcGIS server-based Web map software.

II. RESEARCH METHODOLOGY

The application of the LSPI approach that is integrated with GIS technology is used as a decision maker in determining or selecting the feasibility of a location. The use of spatial data to analyze the need for geospatial data as a decision-making system [8]. Whereas, the ultimate goal of GIS is to provide support for spatial decisions with multicriteria decision making [15]. Spatial data analysis in our study was used for mapping settlement land to produce information related to the suitability of settlement land. This process must input all the data that will be needed, with the aim of defining spatial data and layer attributes in the form of a spatial shapefile (*.shp). This dataset includes a map of the district of Jepara, Indonesia for each sub-district. The dataset contains attributes, such as: topography/relief parameters, lithology, type of soil, hydrology, and disaster vulnerability [3][4][5]. This spatial data modeling process uses the LSPI method to determine the suitability of settlements land.

Before performing calculations on each criterion using this method. First, we determine the weight for each criterion.

A. Analysis Parameter

Spatial data will be applied in the form of layers and tables by assigning a weighting value to each parameter criterion that will be used for analysis using the LSPI method [4][20]. In the initial stage, we will analyze map information on settlements land areas. After the data is poured into layers and tables, the next step is to use the LSPI approach to calculate the weights for each parameter criterion in order to provide an analysis of the suitability of settlements land. In determining the weight vector, this model also allows the author to describe variations or uncertainties in the judgment of experts and the Regional Development Planning Agency of Jepara district. The first step is to examine the map data on the suitability of settlement land. The determination of the weight value for each criterion of suitability of settlements land is entered as in Table I, to calculate the parameters of this analysis. In the table, it can be explained that there are several criteria in each attribute with a weighted value between 0 to 10 [4]. The parameters of this analysis are determined by entering the weight value for each criteria for the suitability of settlement land as shown in Table I.

TABLE I. THE CRITERIA WEIGHT OF SETTLEMENTS LAND [4]

Criteria	Weight
Topography/Relief	
I (0-5%) / (flat-sloping)	5
II (5-15%) / (wavy)	4
III (15-25%) / (low hilly)	3
IV (25-45%) / (hilly)	2
V (>45%) / (mountainous)	1
Lithology	
Lb (massive igneous stone)	5
Lp (pyroclastic stone)	8
Lk (Coarse grained clastic sediment)	5
Lh (fine-grained clastic sediment)	2
Lg (limestone and metamorphic sediments)	3
Li (limestone)	5
La (Aluvium / Coluvium)	10
Type of soil	
S1 (Crude: Regosol, Litosol, Organosol)	1
S2 (Rather roughly: Podsolik, Andosol)	4
S3 (Medium: Alluvial chocolate, Mediteran)	5
S4 (Somewhat subtle: Gley humus, Rensina, Podsol)	3
S5 (Refined: Grumosol, Latosol, Alluvial Gray)	2
Hydrology	
A1 (High productivity, wide spread)	5
A2 (Medium productivity, wide spread)	4
A3 (Medium productivity- high local (local))	3
A4 (Small productivity- medium local (local))	2
A5 (Rare groundwater)	0
Disaster vulnerability	
E1 (Very heavy)	0.5
E2 (Heavy)	0.6
E3 (Moderate)	0.7
E4 (Light)	0.8
E5 (Without)	1.0

B. Geoprocessing Layer

After determining the weighting value for each criterion, the next step is to perform the geoprocessing layer process. In this process, it functions to digitize analog maps by inputting all data attributes, parameters, and criteria in the form of a form file (*.shp) which will become a layer. The next stage will carry out the buffer process, which will be

carried out after the layer is formed, with the aim of creating polygons from the area layer. After this process is formed, the union process will be carried out to unite the main data layer with the area layer. In this process, we will remove layers using the intersecting process, this is because this process produces several layers that are outside the range of the actual layer. So, in detail the process of analyzing settlements land can be explained in Fig. 1, while Fig. 2 is the process of analyzing the level of suitability of settlement land.

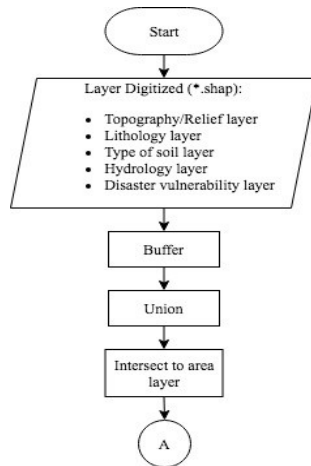


Fig. 1. Geoprocessing layer of settlements land

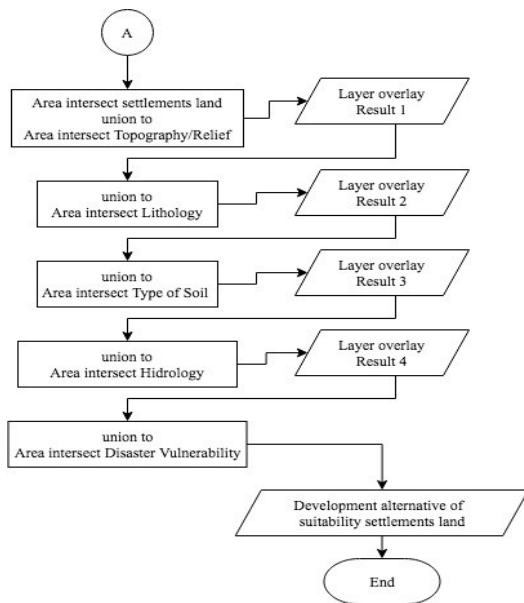


Fig. 2. Overlay result of development alternative of settlements land as a suitability settlement land

In the figure, we analyze the data from the initial data to make a decision. Layers of topography/relief, lithology, type of soil, hydrology, and disaster vulnerability in unity. From the union results, the overlay stage is carried out so that the 5 layers on the map are combined. Then, from the results of the overlay, the results of data analysis are formed from 5 layers into 1 main layer.

C. Framework Spatial Using Land Suitability Potential Index

The LSPI method is a quantitative comparison method that combines several different measurement criteria. Where, each of the existing criteria can provide several alternatives that are used for decision making as a solution to a problem. The use of this method is a way to determine the carrying capacity of land with numbers, the higher the number/value, the land has a high ability. In the preparation of the LSPI, the parameters that affect the value of the land suitability potential index are used, namely: topography/relief (T), lithology (L), type of soil (S), hydrology (H), and disaster vulnerability (D). In preparation for determining the land suitability potential index using equation [4].

$$LSPI = (T + L + S + H) * D \quad (1)$$

From the calculation results according to equation (1) described in Figure 3, which is a sequence of steps in calculating LSPI.

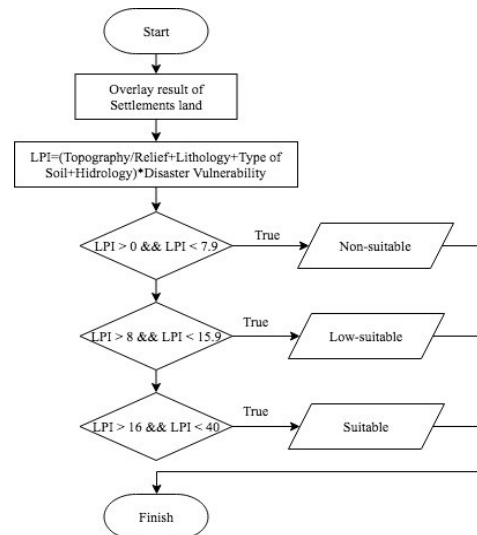


Fig. 3. Geoprocessing layer flow of overlay layer on suitability settlements land

The Land Suitability Potential Index (LSPI) states the relative potential of land for general uses. The higher the LSPI value, the higher the ability of the land if it is used for land processing activities so that it can provide optimal results. Land potential can be classified relatively into 5 classes, namely very high, high, Moderate, low, and very low. In this study, the land potential index method is used to determine the suitability of residential land in Jepara district with the parameters of topography/relief, lithology, type of soil, hydrology and disaster vulnerability as limiting factors, presented in Table II.

TABLE II. CLASS OF LAND SUITABILITY POTENTIAL INDEX

Class	Land Potential Class	Value Range
I	Very high	32 – 40
II	High	24 – 31.9
III	Moderate	16 – 23.9
IV	Low	8– 15.9
V	Very low	0 – 7.9

After being analyzed based on the LSPI formula, a value is obtained, thus the same process will occur for each existing parameter, the final value will then appear in each part of the layer map. Determine the smallest and largest values of all these calculations. The higher the LSPI value, the higher the ability of the land to be used for land processing activities so that it can provide optimal results. Thus, the obtained land potential values can be classified into 5 classes, namely: 32 – 40 (very high), 24 – 31.9 (high), 16 – 23.9 (moderate), 8 – 15.9 (low), and 0 – 7.9 (very low).

Next, overlay so that one map is obtained with variables from each map that is overlaid. The last step is to add up the scores from each map on each variable using the LSPI formula based on (1), then from the results of calculations and then classification according to the total value of the land potential index, the area is obtained based on the land potential index in Jepara district, which is presented in Table III.

TABLE III. AREA BASED ON LAND POTENTIAL INDEX

Land Potential Index Criteria	Wide (Ha)	Procentase (%)
Very high	2.0901	7.626
High	16.2630	59.342
Low	7.000	25.542
Very low	2.0527	7.49

From the weight values on the parameters in the Jepara sub-district, the system will analyze using the land suitability potential index method and the analysis results in the form of numbers that will determine the area map that is suitable or low-suitable or non-suitable for the suitability of settlements land in Jepara district. Then the classification process is based on class, divided into 3 classes, namely: class I (red area class which indicates non-suitable), class II (yellow area class that is low-suitable), and class III (green area class which indicates suitable). From this class coloring, can get information about land in a location or settlement area that is in accordance with the capabilities of the land and which land has the potential to be used as a settlement location or area, presented in Table IV.

TABLE IV. CLASSIFICATION OF CLASS

Class	Suitability	Value Range
I	Non-suitable	0 – 7.9
II	Low-suitable	8 – 15.9
III	Suitable	16 – 40

III. RESULT AND DISCUSSION

In the geoprocessing layer, the sample used is private data from the Department of Regional Development Planning Agency of Jepara district, Indonesia. Geoprocessing layer to determine the suitability of settlement land mapping in Jepara districts which is a base map of sub-district boundaries in Jepara districts with different colors and there are 16 sub-districts based on spatial data weighting analysis using a web-map based on ArcGIS server, as presented in Fig. 4.

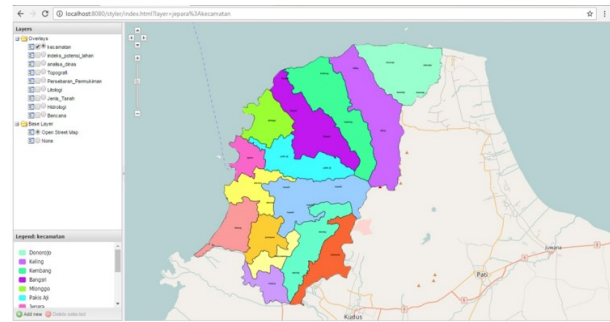


Fig. 4. Sub-District Base Map

Where the results of this mapping can display an analysis of five conditions of settlement land based on each criterion, as presented in Fig. 5.

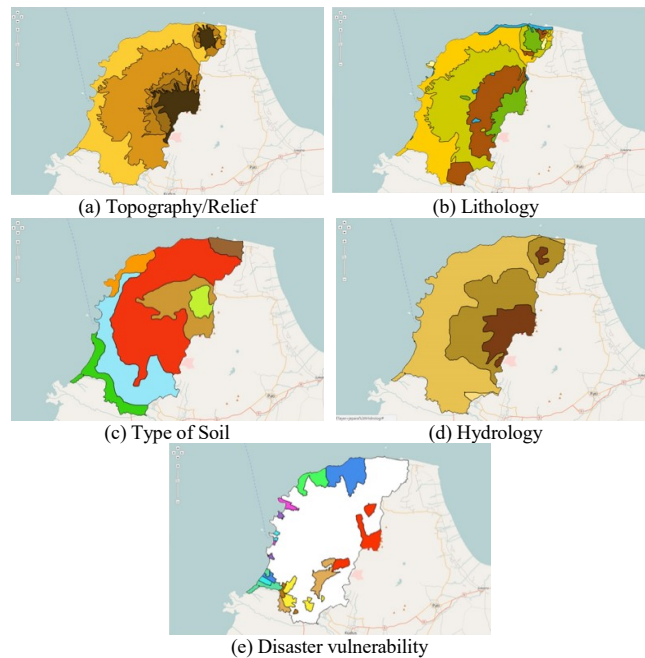


Fig. 5. Base Map of each criterion on settlements land

In Fig. 5(a) to determine the suitability of settlements land on the topographic/relief base map. The orange color is a topography/relief that is very suitable for the development of settlement land designations with a slope of 0 - 5%, the light brown color is a topography/relief suitable for the development of settlement land designations with a slope of 5 - 15%, the brown color is a topography/relief sufficiently suitable for the development of settlement land designations with a slope of 15 - 25%, The dark brown color is a topography/relief that is non-suitable for the development of settlement land designations with a slope of 25-40% and the black color with a slope of more than 40% is a topography/relief that is non-suitable for the development of settlements land use. While in Fig. 5(b) to determine the suitability of settlements land on the lithology base map. In the types of La alluvium/coluvium stone with orange color markings, Lp pyroclastic stone with light green markings, Lh fine-grained clastic sediment with blue markings, Lb massive igneous stone with dark green markings, Ll limestone with yellow markings, and LK coarse grained clastic sediment with brown markings.

Meanwhile, to determine the suitability of settlement land presented in Fig. 5(c) based on the basic map of soil types. The soil types are alluvial with orange markings, regosol brown soils with brown markings, latosol brown soils with light brown markings, andosol brown soils with light green markings, litosol red soils with red markings, mediteran association soils with light blue markings, and alluvial gray soil with green markings. Fig. 5(d), suitability of settlement land based on a hydrology base map. The hydrology base map describes the distribution of groundwater in the Jepara district. Using a gradient color that shows the darker the color on the map layer means that groundwater is decreasing or groundwater is getting scarce. Also, Fig. 5(e), to determine the suitability of settlements land based on a disaster vulnerability base map. The white color is a non-disaster-prone area, the red color is a landslide-prone area, the flood-prone area is marked in yellow, the brown color indicates a flood and drought-prone area, the light blue color is prone to flooding and tidal waves, while the dark blue color indicates prone to floods, tidal waves, and droughts. The dark green color indicates tidal waves and drought, light brown color indicates prone to drought disasters, the purple and pink colors indicate prone to abrasion and hurricane disasters, while the green color indicates prone to tidal wave and abrasion disasters.

After all parameters are entered, the calculation process is carried out using the LSPI method, which refers to equation (1) where the weight value of the parameters refers to Table I. Thus, the weighting value for each criterion is obtained, as follows: topography/relief has a weight value of 5, lithology of 10, soil type of 5, hydrology of 5 and disaster vulnerability of 1. Then calculate the LSPI value, thus a value of 25 is obtained with a land suitability potential index categorized as having a very good land classification (see Table IV). Layer analysis is based on the parameters used to analyze the suitability of settlements land in the Jepara district.

Thus, the results of determining the suitability of settlements land on the base map of the land suitability potential index are presented in Fig. 6. From the union results, the overlay stage is carried out so that the 5 layers on the map are combined. Then, from the results of the overlay, the results of data analysis are formed from 5 layers into 1 main layer. Where, the green color is an area that has the potency for development of settlements land designation, the yellow color is an area that is low-potency for development of settlements land designation development and red is an area that is non-potency for the development of settlement land designation in Jepara districts.

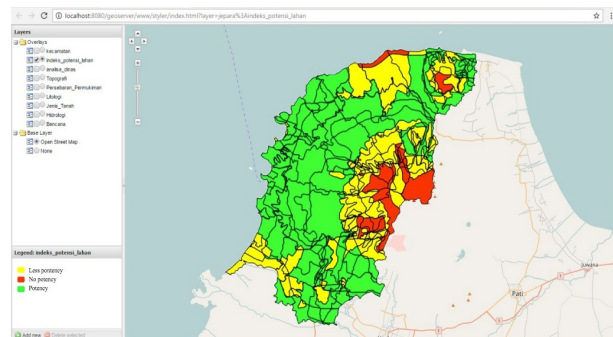


Fig. 6. Base Map of Land suitability Potential Index

An important factor in the accessibility of research and methods is the availability of tools that implement them, for example the ArcGIS product suite for implementing LSPI methods including weighting overlays and map algebra. The final result of this paper is recommendations for further actions for decision makers which are presented in the form of a suitability map. In Figure 7, a map of the suitability of raster and vector output is presented for mapping the distribution and knowing the distribution of suitable settlement areas in the Jepara area generated in ArcGIS using the LSPI method plugin.

Testing the application of land suitability mapping for settlements in Jepara district based on GIS technology calculates the success rate of calculating settlement land suitability analysis using the LSPI approach. The results of the calculation of the LSPI value with a land potential index categorized as having a good land classification [4].

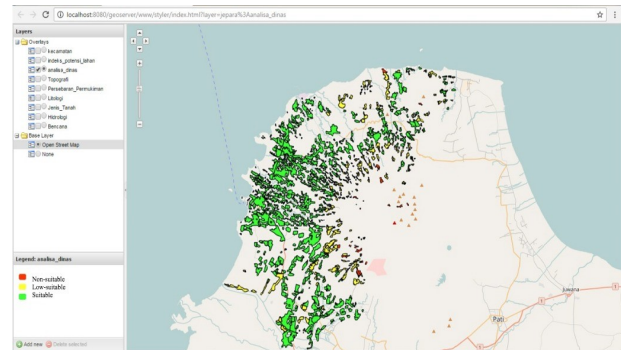


Fig. 7. Base Map for Settlement Evaluation

IV. CONCLUSION

Based on the results obtained in the geoprocessing layer based on the calculation of the LSPI method, in determining the weighting of the criteria for the suitability of settlements land which is classified relatively into 5 classes, namely very high, high, moderate, low, and very low. Spatial data modeling for land suitability mapping for settlements uses a GIS-based LSPI approach. The use of this method shows the advantages of mapping the suitability of settlements land which will produce a layer of area information in the form of non-suitable, low-suitable and suitable. There is a clear need for models such as decision support systems, which might help solve complex problems such as mapping the suitability of settlements land.

V. FURTHER WORKS

Despite these developmental achievements, there are still many things that need to be improved from the analysis of spatial data using the methods in our paper. It is hoped that further research will develop the use of the model by collaborating with the multi-attribute decision making method and the classification method. The aim is to compare the results of the classification of settlement land suitability for each type of method used.

ACKNOWLEDGMENT

The author would like to thank Amikom Yogyakarta University for financial support in this research. As well as to the Department of Regional Development Planning Agency of Jepara districts, which has assisted and provided

information regarding spatial data regarding the attributes of land suitability potential index in an area in the districts of Jepara.

REFERENCES

- [1] H. Akinci, A. Y. Özalp, and B. Turgut, "Agricultural land use suitability analysis using GIS and AHP technique," *Comput. Electron. Agric.*, vol. 97, pp. 71–82, 2013.
- [2] A. Bjørn, M. Margni, P. O. Roy, C. Bulle, and M. Z. Hauschild, "A proposal to measure absolute environmental sustainability in life cycle assessment," *Ecol. Indic.*, vol. 63, no. April 2016, pp. 1–13, 2016.
- [3] W. Wei, P. Shi, J. Zhou, H. Feng, X. Wang, and X. Wang, "Environmental suitability evaluation for human settlements in an arid inland river basin: A case study of the Shiyang River Basin," *J. Geogr. Sci.*, vol. 23, no. 2, pp. 331–343, 2013.
- [4] Suharsono, *Identifikasi Bentuk Lahan dan Interpretasi Citra Penginderaan Jauh. Fakultas Geografi. Universitas Gadjah Mada. Yogyakarta*, 1995.
- [5] J. Wilhelm, "Urban planning in Brazil. The case of an ill-developed though modern country," *Habitat Int.*, vol. 16, no. 2, pp. 65–71, 1992.
- [6] P. Zeilhofer and V. P. Topanotti, "GIS and ordination techniques for evaluation of environmental impacts in informal settlements: A case study from Cuiabá, central Brazil," *Appl. Geogr.*, vol. 28, no. 1, pp. 1–15, 2008.
- [7] X. Ke, J. van Vliet, T. Zhou, P. H. Verburg, W. Zheng, and X. Liu, "Direct and indirect loss of natural habitat due to built-up area expansion: A model-based analysis for the city of Wuhan, China," *Land use policy*, vol. 74, no. November, pp. 231–239, 2018.
- [8] J. Malczewski, "GIS-based multicriteria decision analysis: A survey of the literature," *Int. J. Geogr. Inf. Sci.*, vol. 20, no. 7, pp. 703–726, 2006.
- [9] W. Song and H. Li, "A new method for acquiring long-term high-precision spatial data on rural settlements," *MethodsX*, vol. 8, p. 101249, 2021.
- [10] Y. Zhang *et al.*, "Landscape pattern and transition under natural and anthropogenic disturbance in an arid region of northwestern China," *Int. J. Appl. Earth Obs. Geoinf.*, vol. 44, pp. 1–10, 2016.
- [11] V. M. Salem Chakhar, "Spatial multicriteria decision making," in *Encyclopedia of GIS*, Springer, Boston, MA, 2008.
- [12] A. Rikalovic, I. Cosic, and D. Lazarevic, "GIS based multi-criteria analysis for industrial site selection," *Procedia Eng.*, vol. 69, pp. 1054–1063, 2014.
- [13] K. Eldrandaly, "A GEP-based spatial decision support system for multisite land use allocation," *Appl. Soft Comput. J.*, vol. 10, no. 3, pp. 694–702, 2010.
- [14] P. B. Keenan and P. Jankowski, "Spatial Decision Support Systems: Three decades on," *Decis. Support Syst.*, vol. 116, no. October 2018, pp. 64–76, 2019.
- [15] P. Nijkamp and P. Rietveld, "Multiple objective decision analysis in regional economics," in *Handbook of regional and urban economics. Vol. 1: regional economics*, vol. 1, ©Elsevier Science Publishers BV, 1986, pp. 493–541.
- [16] S. Revitalizing, P. Of, and B. By, "Slum revitalizing plan of baghdadiyah by spatial re-modeling configuration," *J. Geomatics Plan.*, vol. 4, no. 2, pp. 69–80, 2017.
- [17] S. B. Goirán, J. N. Aranibar, and M. L. Gomez, "Heterogeneous spatial distribution of traditional livestock settlements and their effects on vegetation cover in arid groundwater coupled ecosystems in the Monte Desert (Argentina)," *J. Arid Environ.*, vol. 87, pp. 188–197, 2012.
- [18] Widiatmaka, W. Ambarwulan, Y. Setiawan, and C. Walter, "Assessing the suitability and availability of land for agriculture in tuban regency, East Java, Indonesia," *Appl. Environ. Soil Sci.*, vol. 2016, pp. 1–13, 2016.
- [19] X. Zhang and X. Cai, "Climate change impacts on global agricultural land availability," *Environ. Res. Lett.*, vol. 6, no. 1, 2011.
- [20] S. Bandyopadhyay, R. K. Jaiswal, V. S. Hegde, and V. Jayaraman, "Assessment of land suitability potentials for agriculture using a remote sensing and GIS based approach," *Int. J. Remote Sens.*, vol. 30, no. 4, pp. 879–895, 2009.
- [21] X. Zhao, X. Huang, L. Li, and J. Fan, "Potential calculation of rural settlements consolidation: a case study of Tianchang City in Anhui Province," *PIANGENG 2010 Photonics Imaging Agric. Eng.*, vol. 7752, no. 1, 2011.
- [22] M. Kuffer, J. Barros, and R. V. Sliuzas, "The development of a morphological unplanned settlement index using very-high-resolution (VHR) imagery," *Comput. Environ. Urban Syst.*, vol. 48, pp. 138–152, 2014.
- [23] J. Malczewski and M. Jackson, "Multicriteria spatial allocation of educational resources: An overview," *Socioecon. Plann. Sci.*, vol. 34, no. 3, pp. 219–235, 2000.
- [24] V. R. Sumathi, U. Natesan, and C. Sarkar, "GIS-based approach for optimized siting of municipal solid waste landfill," *Waste Manag.*, vol. 28, no. 11, pp. 2146–2160, 2008.
- [25] A. Van Niekerk *et al.*, "Development of a multi-criteria spatial planning support system for growth potential modelling in the Western Cape, South Africa," *Land use policy*, vol. 50, pp. 179–193, 2016.